



WatchNET Access Integrated Security Management Software

Configuring WAA TCP 485 Converter



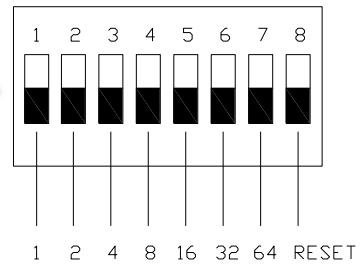
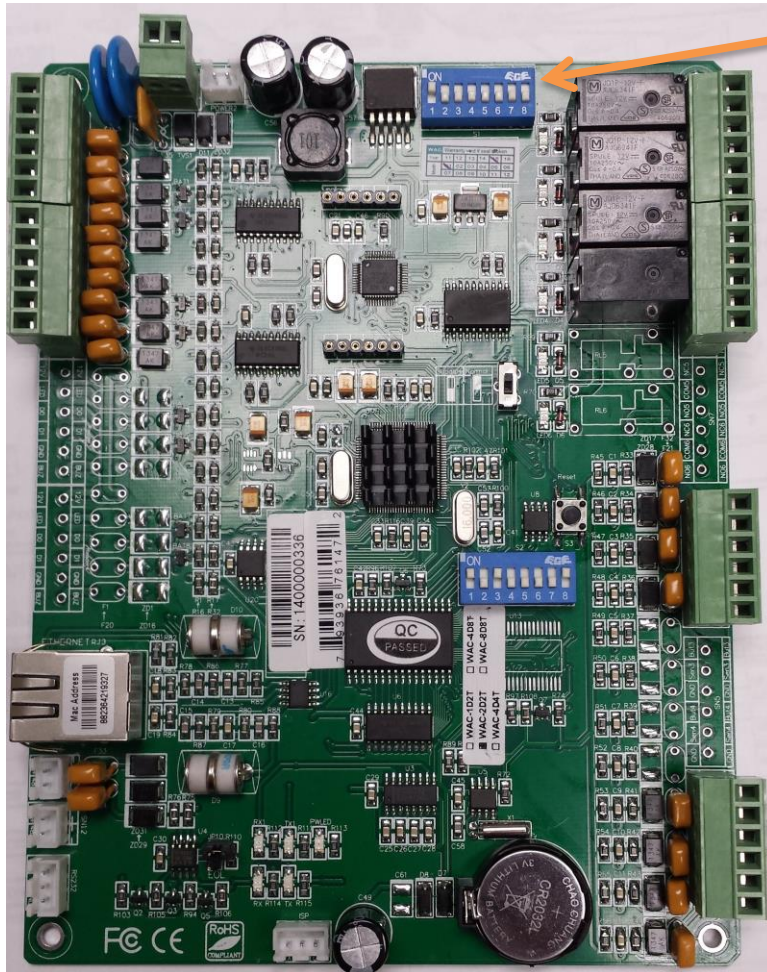
Revision History

Revision	Date	Author	Description of Changes
1.0	05/03/2015	Peter Punzalan	Manual Created.

Configuring WAA-TCP-485 Converter

To connect using TCP 485 Converter you need to set first the ID for each panel, you can configure the ID of each panel on the top bank DIP Switch of the panel, for more details refer to WAC Controller Dip Switch Settings manual.

Note: Each panel must have a unique ID Address



ID Addressing settings

Panel/DIP	DIP 1	DIP 2	DIP 3	DIP 4	DIP 5	DIP 6	DIP 8
Panel 1	ON	OFF	OFF	OFF	OFF	OFF	OFF
Panel 2	OFF	ON	OFF	OFF	OFF	OFF	OFF
Panel 3	ON	ON	OFF	OFF	OFF	OFF	OFF
Panel 4	OFF	OFF	ON	OFF	OFF	OFF	OFF
Panel 5	ON	OFF	ON	OFF	OFF	OFF	OFF
Panel 6	OFF	ON	ON	OFF	OFF	OFF	OFF
Panel 7	ON	ON	ON	OFF	OFF	OFF	OFF
Panel 8	OFF	OFF	OFF	ON	OFF	OFF	OFF
Panel 9	ON	OFF	OFF	ON	OFF	OFF	OFF
Panel 10	OFF	ON	OFF	ON	OFF	OFF	OFF
Panel 11	ON	ON	OFF	ON	OFF	OFF	OFF
Panel 12	OFF	OFF	ON	ON	OFF	OFF	OFF
Panel 13	ON	OFF	ON	ON	OFF	OFF	OFF
...							

Panel Connection

