



# WatchNET Access Integrated Security Management Software

## Configuring Active Directory

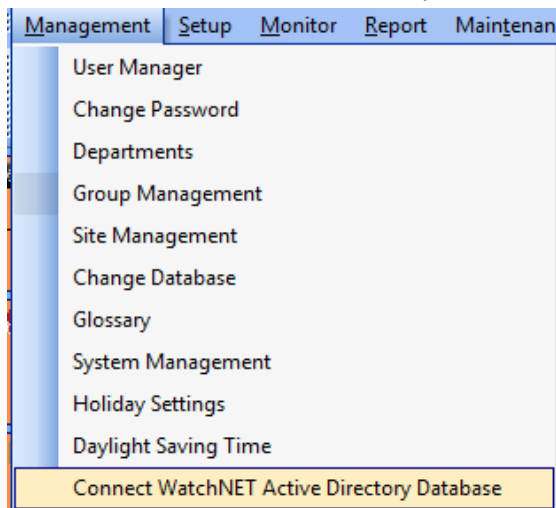


## REVISION HISTORY

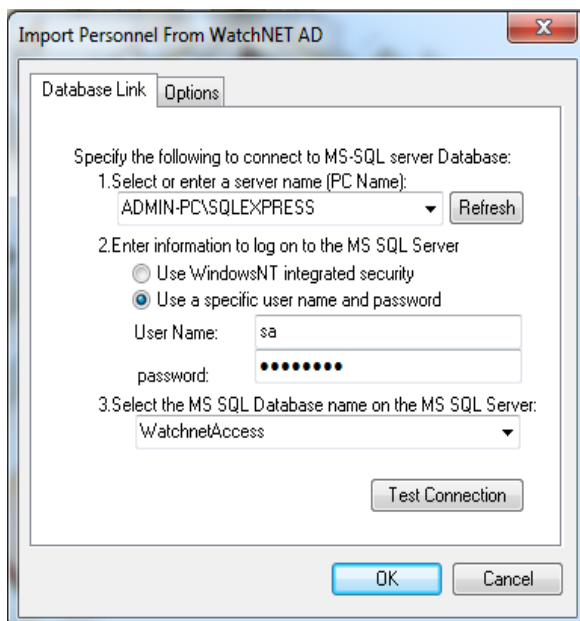
Revision	Date	Author	Description of Changes
1.0	09/16/2013	Pradeep Kumaran	Manual Created.
1.1	11/30/2013	Octavio Colantonio	Updated screen shots.

To start to input personnel from *WatchNETAD* middle table:

1. Click on “*Management*” from the Main Menu then click “*Connect WatchNET Active Directory Database*” from the sub menu to open the “*Import Personnel from WatchNet AD*” window.



2. Setup Database Link to connect *WatchNETAD* table.



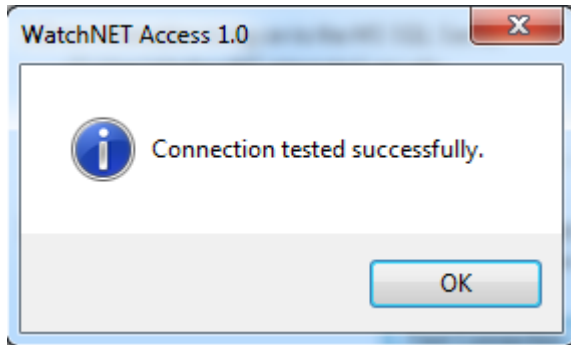
In the *Import Personnel From WatchNET AD* select the *Database Link* tab. Select the *server name* from the *Select or enter a server name (PC Name)* from the drop down menu.

**Note: if the drop down menu is empty then click on the Refresh button.**

Next select *Use a specific user name and password* from the *Enter information to log on to the MS SQL Server* option. Type *sa* for *User Name:* and *watchnet* for *password:*

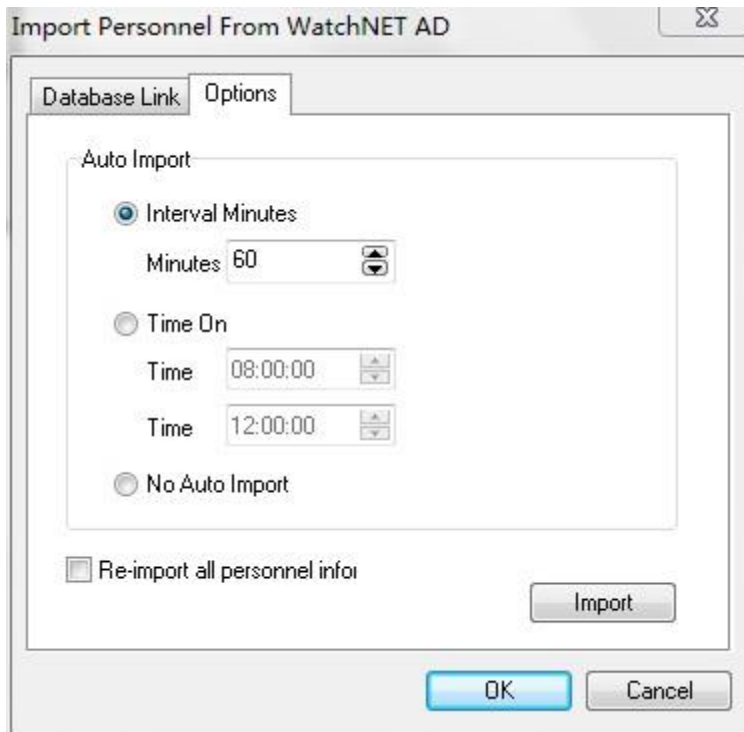
Next select the *WatchnetAccess* database from the drop down menu of the *Select the MS SQL Database name on the MS SQL Server:* option.

To finish configuring the Active Directory setup click on the *Test Connection* button.

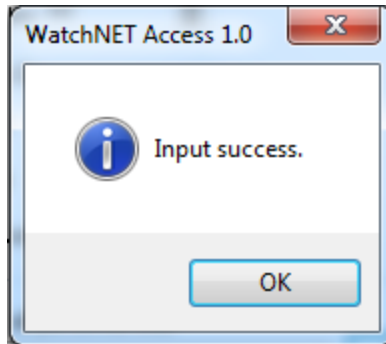


The *Connection tested successfully* message appears. Click *OK* to close the message box.

3. Click on the *Options* tab and select the *Auto Import* option.



4. Click the *Import* button for the first import.



**Note: If the database "WatchNETAD" table does not exist when you click the import button then the software will auto create the table in the database.**

WatchNETAD table structure:

```
CREATE TABLE [WatchNetAD] (  
    [AutoID] [int] IDENTITY (1, 1) NOT NULL ,  
    [ID] [nvarchar] (50) NULL ,  
    [State] [smallint] NULL ,  
    [FirstName] [nvarchar] (20) NULL ,  
    [LastName] [nvarchar] (20) NULL ,  
    [DisplayName] [nvarchar] (50) NULL ,  
    [Office] [nvarchar] (50) NULL ,  
    [TelephoneNumber] [nvarchar] (20) NULL ,  
    [CardNumber] [varchar] (20) NULL  
) ON [PRIMARY]  
ALTER TABLE [WatchNetAD] WITH NOCHECK ADD  
    CONSTRAINT [PK_WatchNetAD] PRIMARY KEY CLUSTERED  
    (  
        [AutoID]  
    ) ON [PRIMARY]
```