



## WatchNET Access Integrated Security Management Software Configuring Mobile Application



Revision History .....2  
 Chapter 1 .....2  
   1.1 Prerequisites .....2  
 Chapter 2 .....2  
   2.1 Installing IIS on windows 7 and windows 10 .....2  
 Chapter 3 .....6  
   3.1 Installing Watchnet Web Service .....6  
 Chapter 4 .....12  
   4.1 Configuring Web Service .....12  
 Chapter 5 .....17  
   5.1 Install and login to the Mobile App .....17

## Revision History

Revision	Date	Author	Description of Changes
1.0	26/06/2014	Octavio Colantonio	Manual Created.
1.1	21/12/2017	Peter Punzalan	Updated screenshot and configurations
2.0	11/23/2018	Peter Punzalan	Updated screenshot and software

### Chapter 1

#### 1.1 Prerequisites

Install the following software in order 1 to 3 :

1. Install SQL Server 2005 Express or SQL Server 2008 Express. (see *WatchNET Access Software Manual*)
2. **Install WatchNET Access Integrated Security Systems Software 1.1.14 or Higher**, (see *WatchNET Access Software Manual*)
3. Install IIS (IIS Version XP: IIS5.1, win7: IIS6.0)

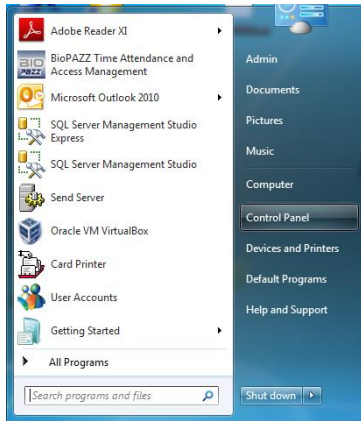
**Note: Mobile App will not work with any WAC Software version lower then 1.1.14**

WATCHNET Web Service allows 3rd party software or hardware to exchange data with WatchNET Access Control software and app’s like smart phones and is compatible with either IOS or Android OS.

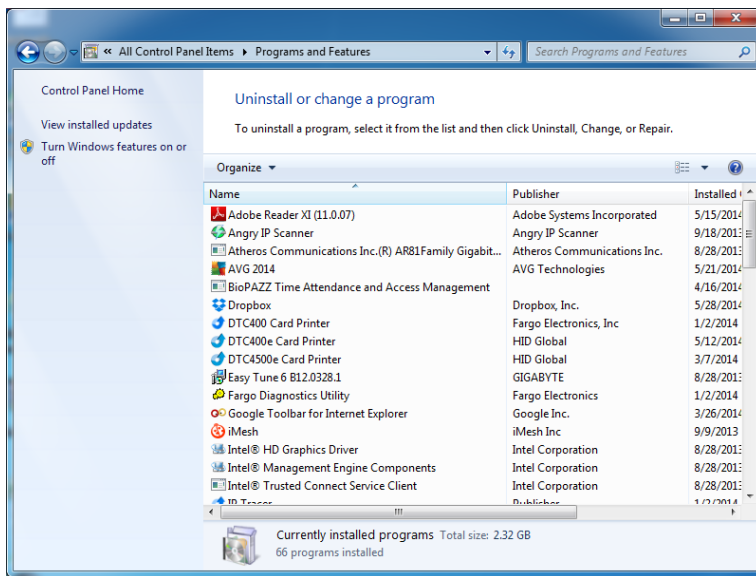
### Chapter 2

#### 2.1 Installing IIS on Windows 7/Windows 10

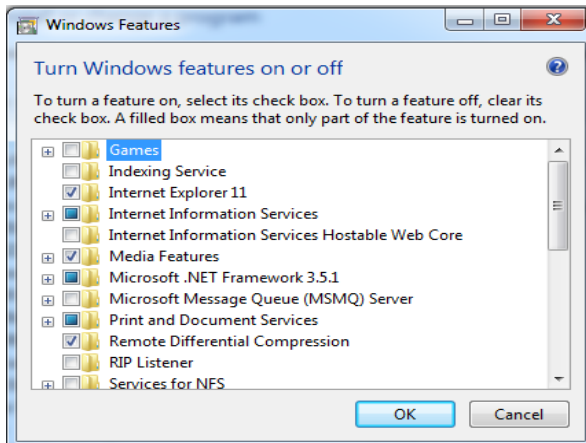
To start to configure the IIS feature click on the *Start* button .



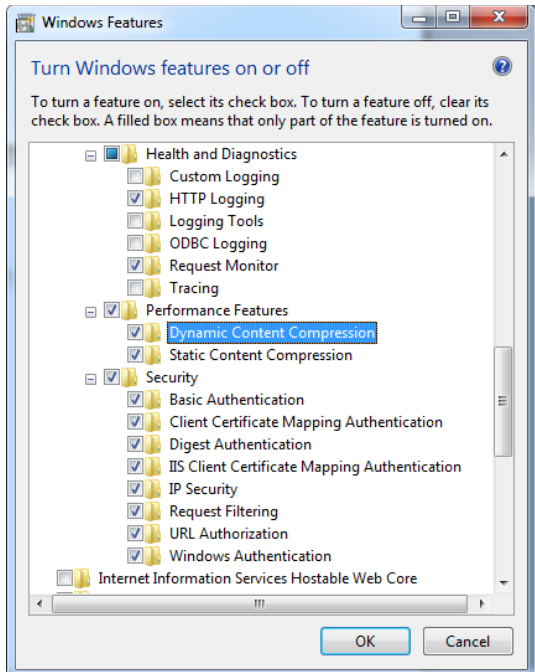
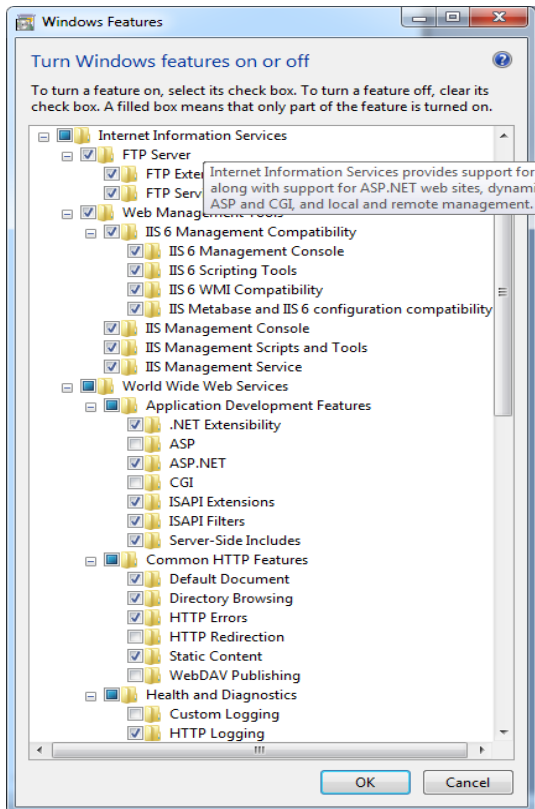
Click on *Control Panel* and then click on  **Programs and Features**



In the *Programs and Features* window click on *Turn Windows features on or off*.

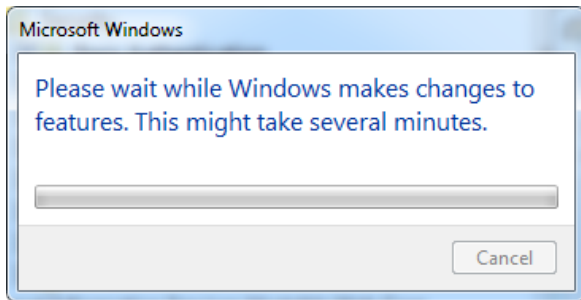


Check *Internet Information Services*.



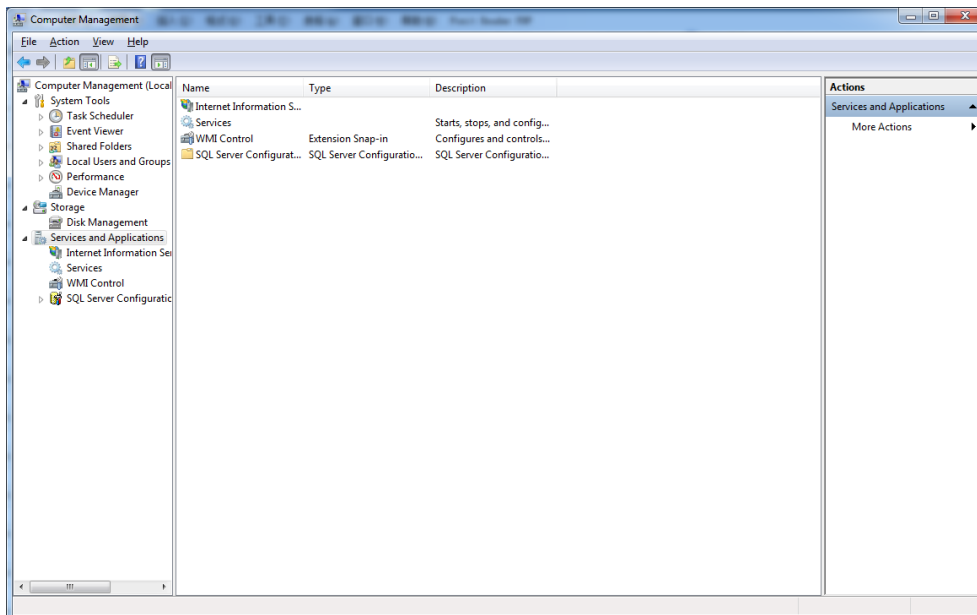
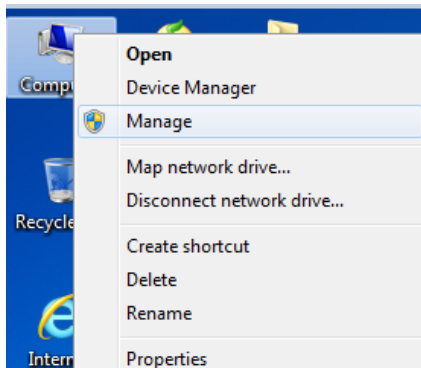
Make sure that all the above options are checked and click *OK*.

**Note:** Same option should be enabled for windows 10 IIS settings.



IIS will now be installed.

To check to see if IIS has been installed right click on *Computer* and select *Manage*.



Click on *Service and Application* and if IIS was installed properly you will see *Internet Information Services*.

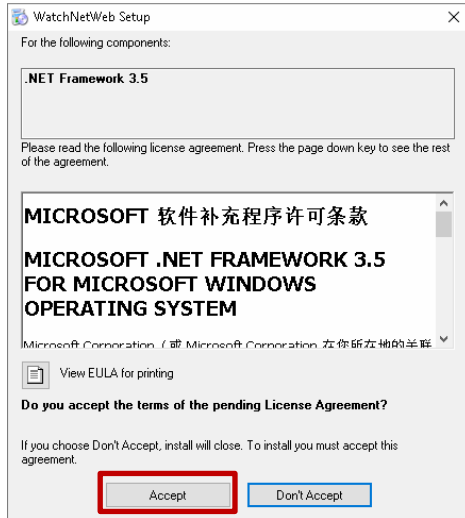
### Chapter 3

#### 3.1 Installing Watchnet Web Service

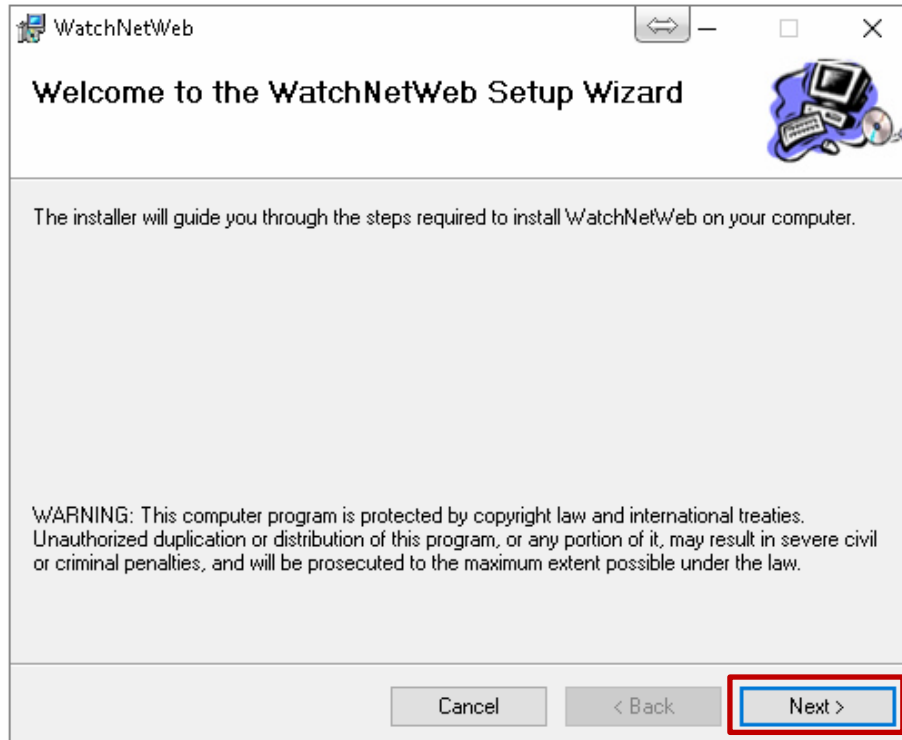
Go to Software installation folder from the CD “WatchNET Access Software CD - Aug 2018\WatchNET Access Software Installation\WA Web Service” and run the “*setup.exe*”

 setup	2018-11-27 10:03 ...	Application	456 KB
 WatchNetWeb	2018-11-27 10:03 ...	Windows Installer ...	5,912 KB

Click **Accept** to continue.



Click the **Next** button to begin installing the software.



Input the Server name(sample server name is " WATCHNETACCESS\SQLEXPRESS")

WatchNetWeb

Link DataBase

server:

db: WatchnetAccess

user: sa

pwd: watchnet

Cancel < Back Next >

**Note: you can retrieve the Server Name from the SQL Server Management Studio.**

To launch the SQL Server Management Studio click on the Start button then All Programs -> Microsoft SQL Server 2008 -> Microsoft SQL Server Management Studio Express.

Connect to Server

Microsoft SQL Server 2008 R2

Server type: Database Engine

Server name: WATCHNETACCESS\SQLEXPRESS

Authentication: Windows Authentication

User name: WATCHNETACCESS\manuel

Password:

Remember password

Connect Cancel Help Options >>

Copy the Server name.

Paste the *Server name* in the *server:* text box and click the **Next** button to continue with the installation.

WatchNetWeb

### Link DataBase

server:  
WATCHNETACCESS\SQLEXPRESS

db:  
WatchnetAccess

user:  
sa

pwd  
watchnet

Cancel < Back Next >

Next enter the **IP Address** of the PC server and click on the **Next** button.

WatchNetWeb

### Web Site

IP:  
192.168.10.19

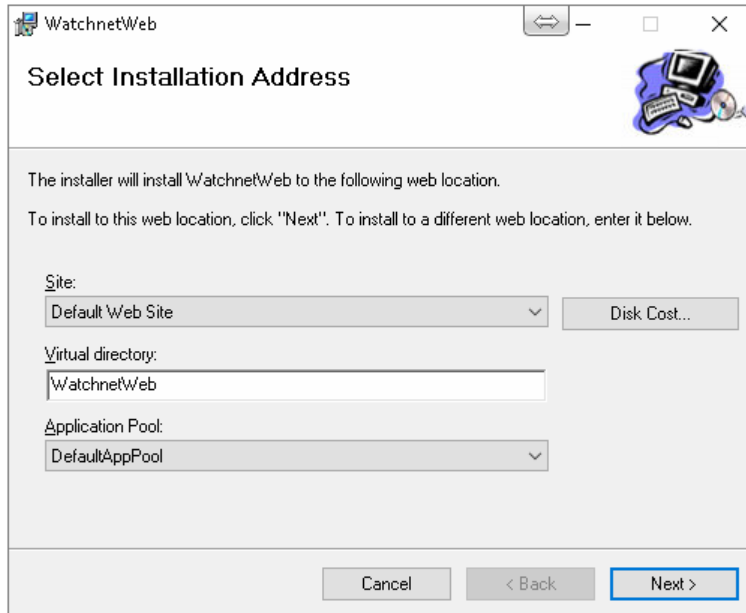
Port:  
7070

Cancel < Back Next >

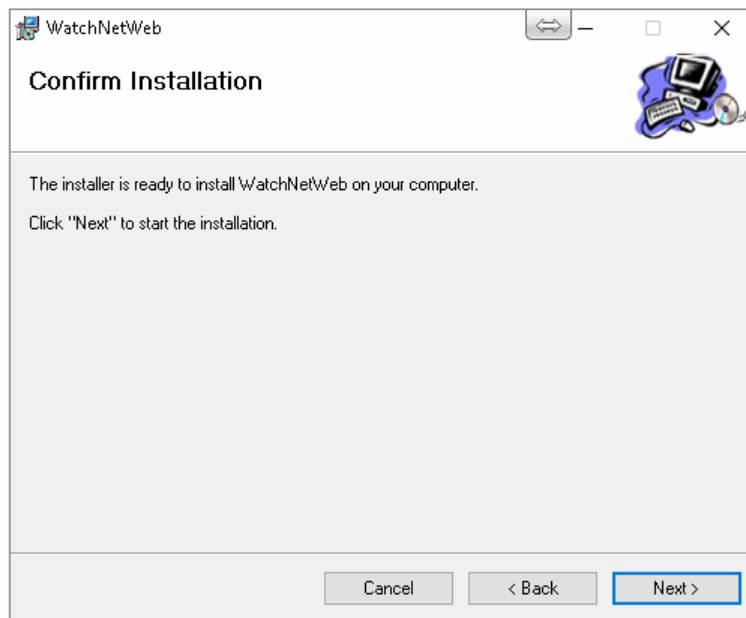
**Note:** default Port setting is 7070, user can define it's own port if needed.



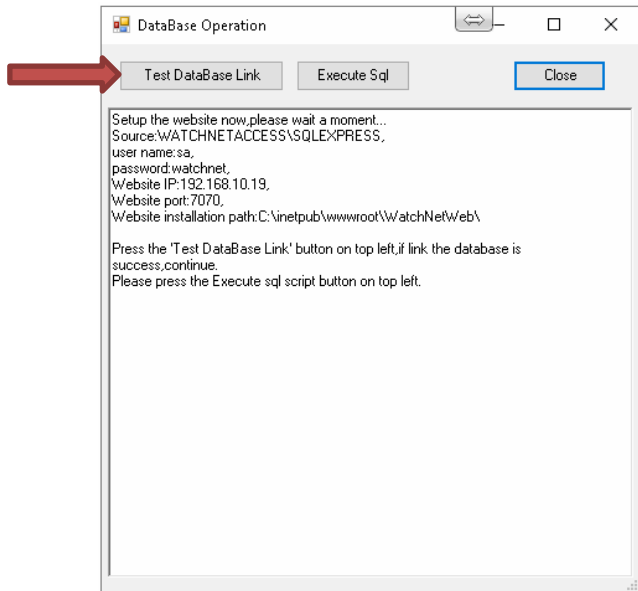
Click **Next** to continue.



Click **Next** to start installation.

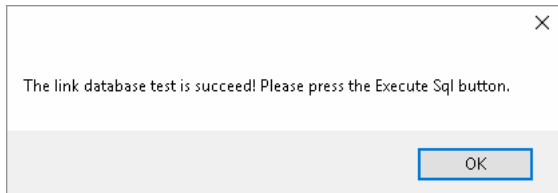


Click **Test Database Link** to test database link.

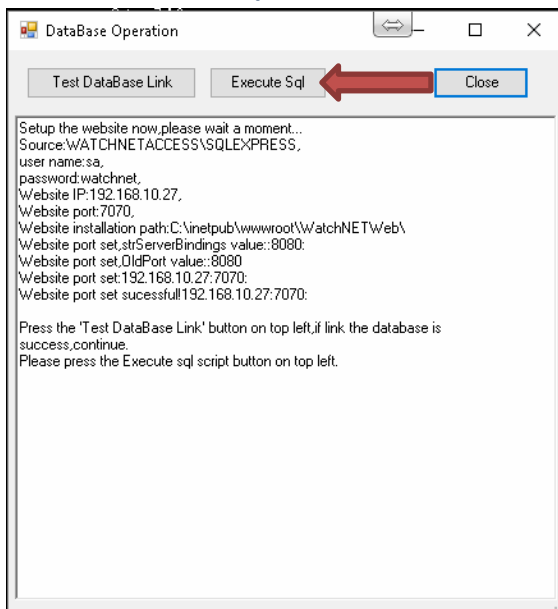


**Note: make sure the port is correct before testing the database link.**

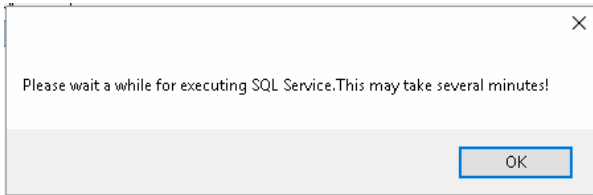
Message window should pop up saying database test is succeded, click ok to continue



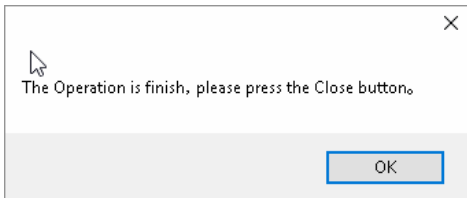
Now Click **Execute Sql** to continue



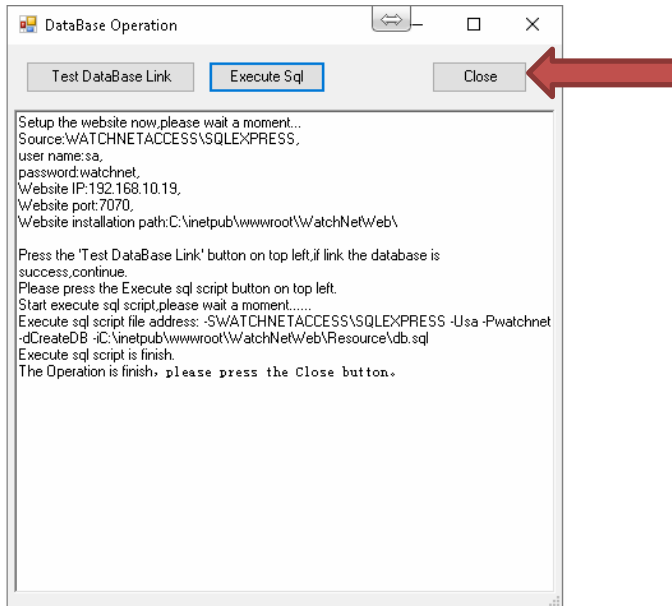
Another window will pop up, click ok to continue



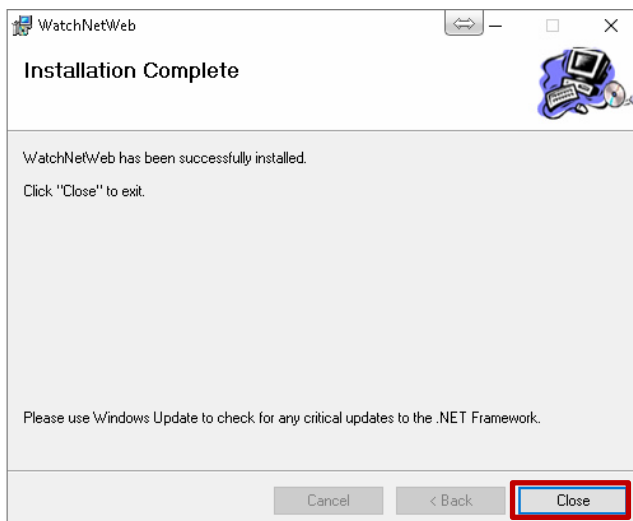
Click **OK** to continue.



Click **Close** to continue the installation.

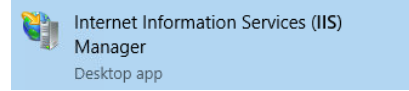


Click the **Close** button to exit the installation.



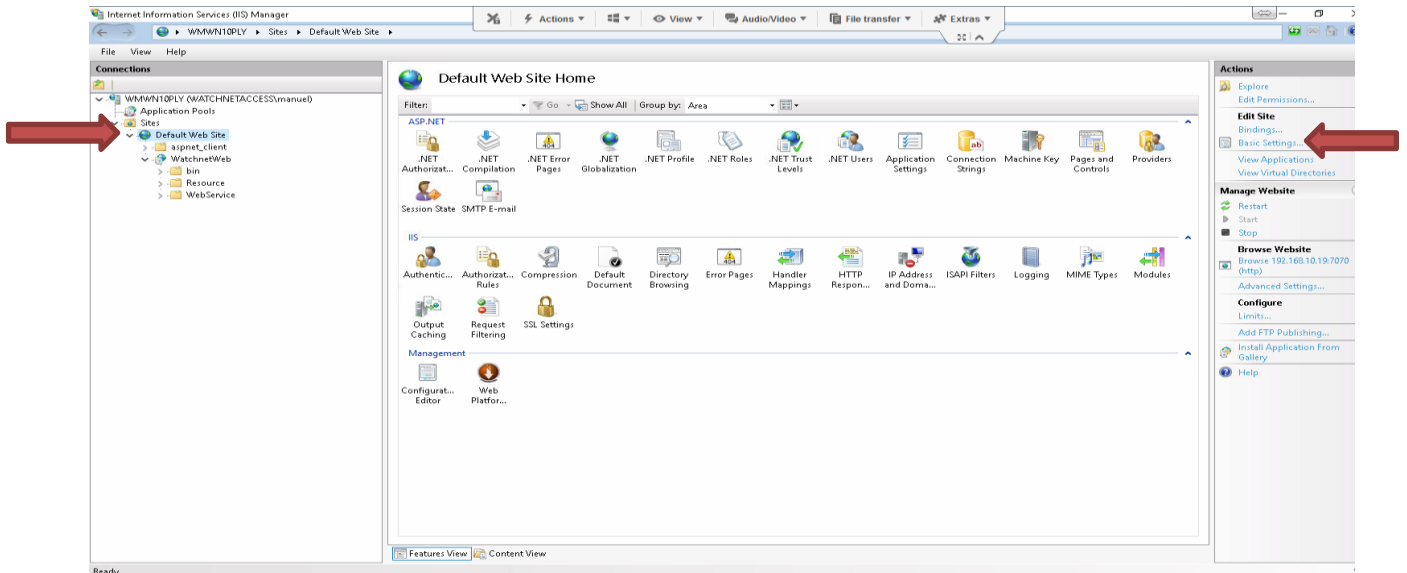
## Chapter 4 Configuring Web Service

For windows 7 and 10 go to start menu and type on the search bar IIS and open Internet Information Services (IIS) Manager

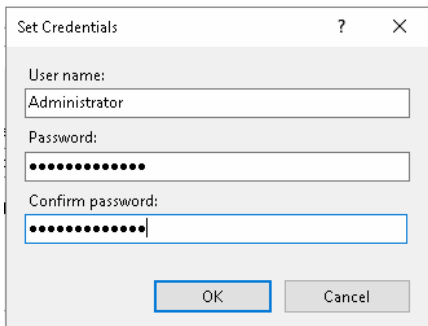
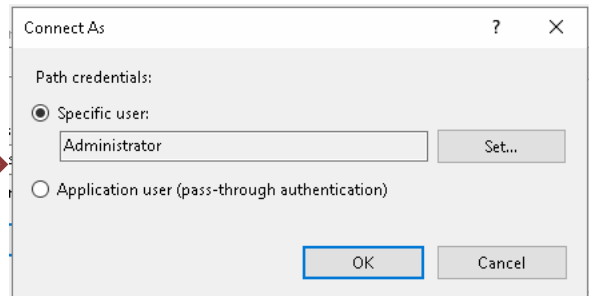
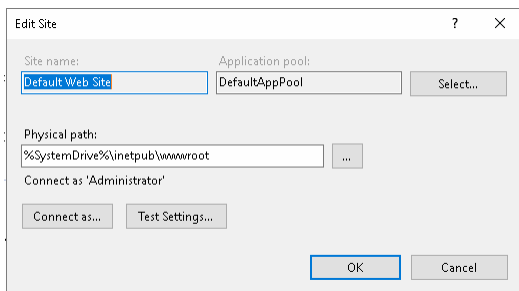


**Note:** you should now see the *WatchNETWeb* folder in the *Default Web Site* folder if the *Web Services* were installed correctly.

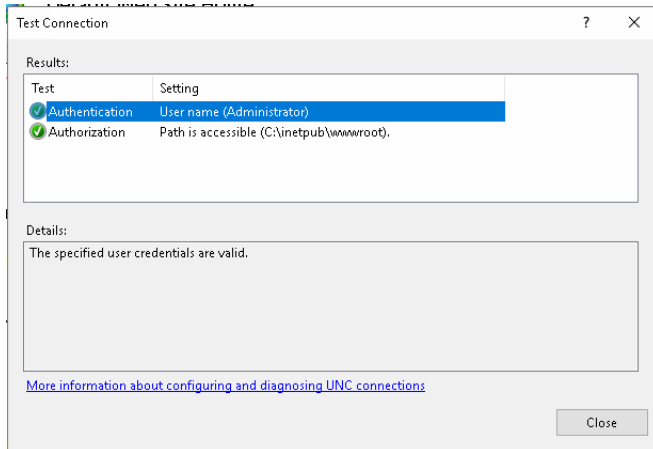
Select *Default Web Site* and click *Basic Settings*.



Click *Connect as...* , select specific user and then click *Set..*.

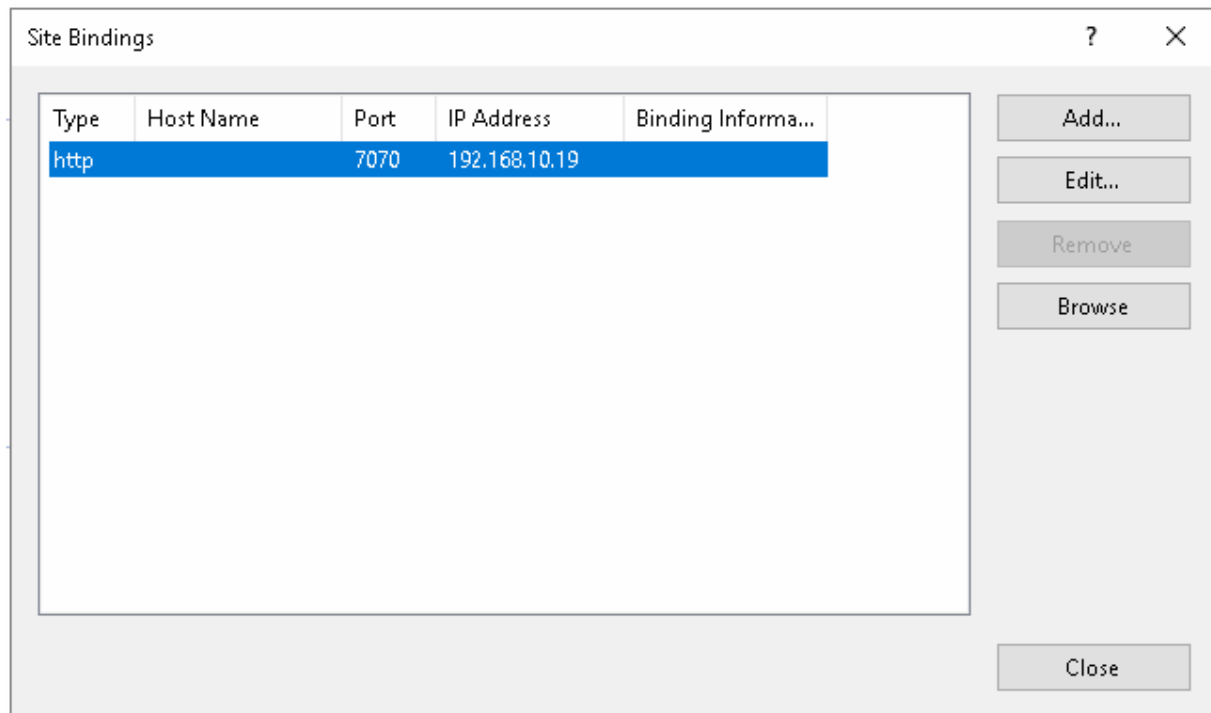


After entering click **“Test Settings...”** to verify the username and password is correct, it should show that credential is valid.

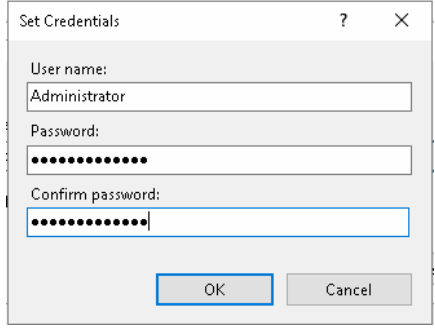
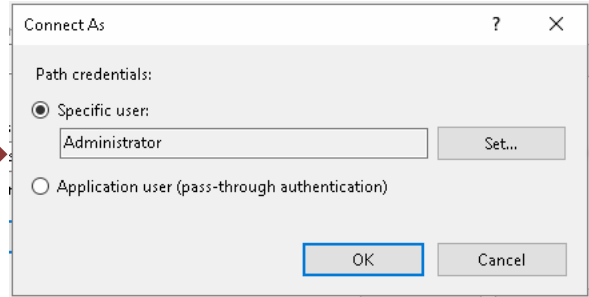
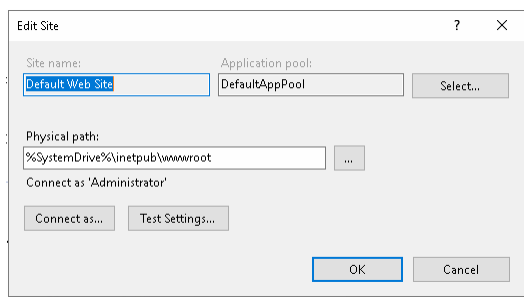
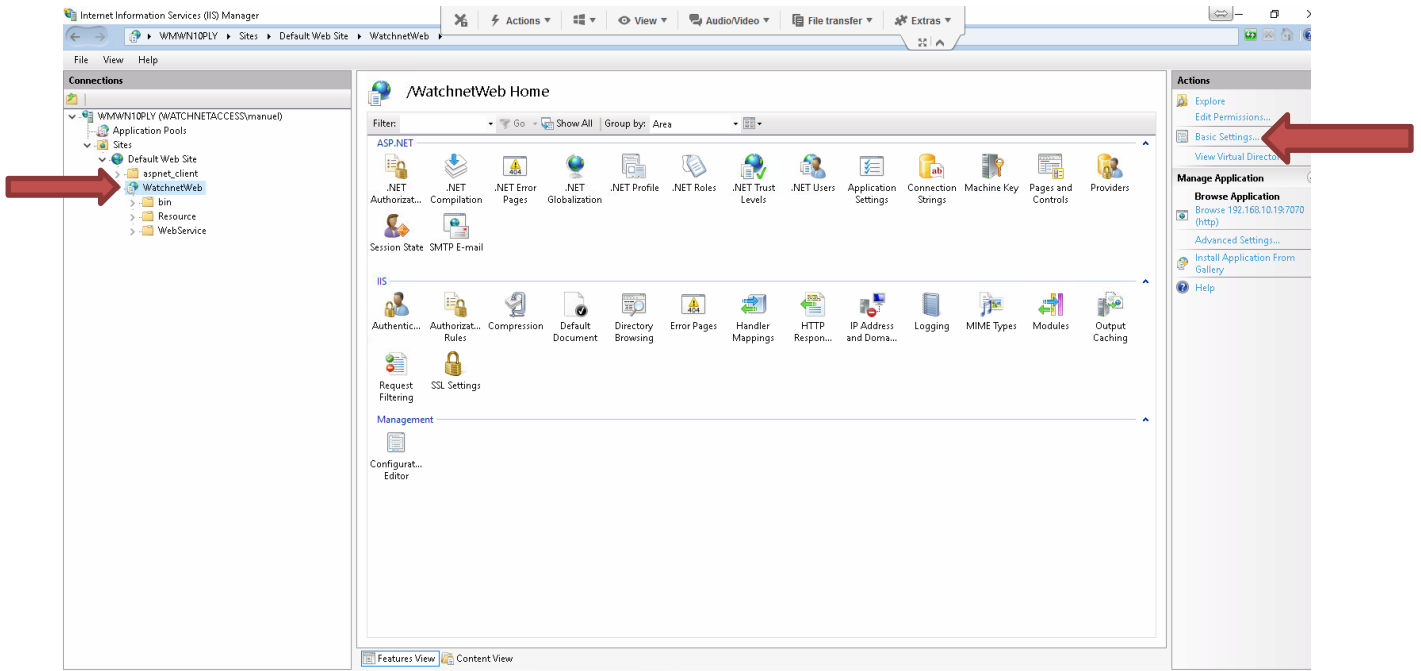


**Note: It is mandatory for the Server PC to have a windows login username and password**

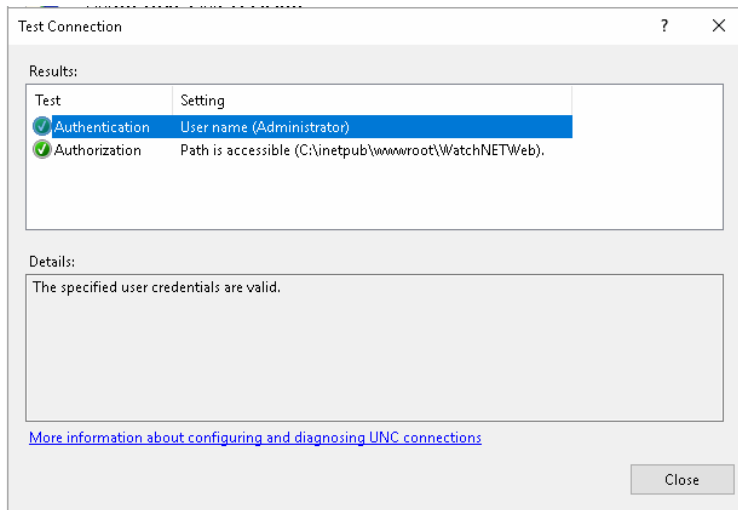
Next we need to check that the *IP Address* and *Ports* are configured correctly. Click on the **Bindings** located above the **Basic Settings**, check and make sure it is the correct IP and Ports.



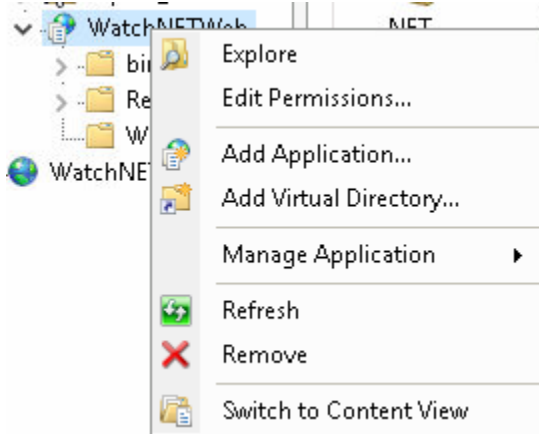
Now, select **“WatchNETWeb”** and click **“Basic Settings...”** on the right Actions Tab and input the windows login again as you did on the Default Web Site.



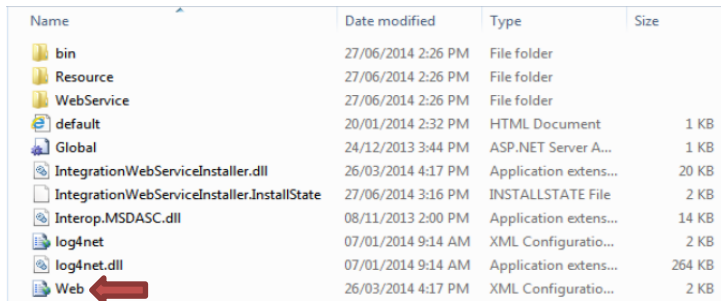
Click Test Settings and make sure that the credential is valid and should display a windows like this image below.



We now have to set the *Database* information for the *Web Service*.  
To set the *Database* information we need to enter the information in the *Web.config* file.  
Right click on the WatchNETWeb folder and click Explorer to open the folder location.



Next, right click the *Web.config* file and edit the file using notepad.



We need to modify the *Server* and the *IP address* value into the correct information.



```
Web - Notepad
File Edit Format View Help
<?xml version="1.0"?>
<configuration>
  <appSettings>
    <add key="ConnectionString" value="server=192.168.2.5;database=WatchnetAccess;user id=sa;pwd=watchnet;Connect
Timeout=30;Pooling=true;Max Pool Size=100;"/>
    <add key="IPAddress" value="192.168.2.5"/>
    <add key="Port" value="47110"/>
    <!--Domain Name and Port-->
    <add key="DomainName" value="park.keyking.net:80"/>
    <!--Invalid MD5 value,0:do not valid; 1:valid-->
    <add key="IsValidateMD5" value="0"/>
    <!--Administrator GroupName-->
    <add key="SuperUserName" value="Administrators"/>
    <!--For BlueTooth send msg(Tencent)-->
    <!--appid-->
    <add key="APPID" value="1400135686"/>
    <!--appkey-->
    <add key="APPKey" value="e91f97160a726b38f95f46df95d3f826"/>
    <!--modelid-->
    <add key="ModelID" value="192650"/>
    <!--sign-->
    <add key="Sign" value="KeyKing"/>
    <!--Alipay NFC Phone APPID-->
    <add key="APPID_Alipay" value="2018103161935604"/>
    <!--Alipay(PID)-->
    <add key="PID_Alipay" value="2088521095562425"/>
```

Edit the following lines:

- 1) `value="server=192.168.2.5;` to `value="server=(Server name with \SQLEXPRESS)`
- 2) `key="IPAddress" value=192.168.2.5` to `key="IPAddress" value=(IP Address of Server PC)`

See the sample image below.



```
Web - Notepad
File Edit Format View Help
<?xml version="1.0"?>
<configuration>
  <appSettings>
    <add key="ConnectionString" value="server=WATCHNET ACCESS\SQLEXPRESS;database=WatchnetAccess;user
id=sa;pwd=watchnet;Connect Timeout=30;Pooling=true;Max Pool Size=100;"/>
    <add key="IPAddress" value="192.168.10.19"/>
    <add key="Port" value="47110"/>
    <!--Domain Name and Port-->
    <add key="DomainName" value="park.keyking.net:80"/>
    <!--Invalid MD5 value,0:do not valid; 1:valid-->
    <add key="IsValidateMD5" value="0"/>
    <!--Administrator GroupName-->
    <add key="SuperUserName" value="Administrators"/>
    <!--For BlueTooth send msg(Tencent)-->
    <!--appid-->
    <add key="APPID" value="1400135686"/>
    <!--appkey-->
    <add key="APPKey" value="e91f97160a726b38f95f46df95d3f826"/>
    <!--modelid-->
    <add key="ModelID" value="192650"/>
    <!--sign-->
    <add key="Sign" value="KeyKing"/>
    <!--Alipay NFC Phone APPID-->
    <add key="APPID_Alipay" value="2018103161935604"/>
    <!--Alipay(PID)-->
    <add key="PID_Alipay" value="2088521095562425"/>
```

Go to *File* and click on *Save*.

**Note:** If windows is not allowing you to modify the file then you need to give full rights to **WatchnetWeb Folder**

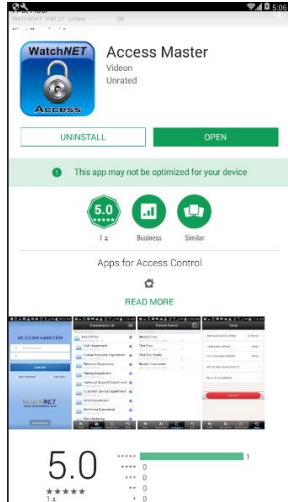


## Chapter 5

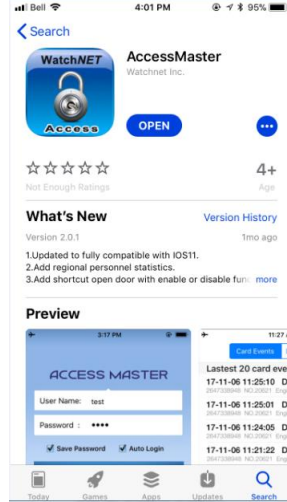
### Install and login to the Mobile App

Download and Install the Mobile App, the app can be downloaded from Playstore for android and Appstore for IOS called **AccessMaster**

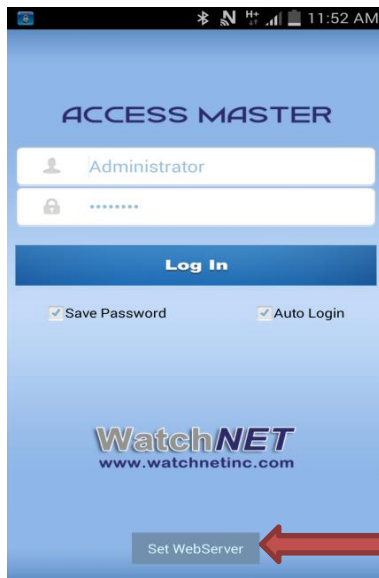
#### Android (Playstore)



#### IOS (App Store)



After installing launch the *Access Master App*.



Click on the *Set WebServer* to enter the *Webserver setup* page.

Back Webserver Setup

Please enter webserver IP:

70.25.52.54

Port:

7070 Test Connection

Advanced

Suffix:

/watchnetweb/WebService/AccessWS

Save Back

Enter the *Webserver IP* address and the *Port* number

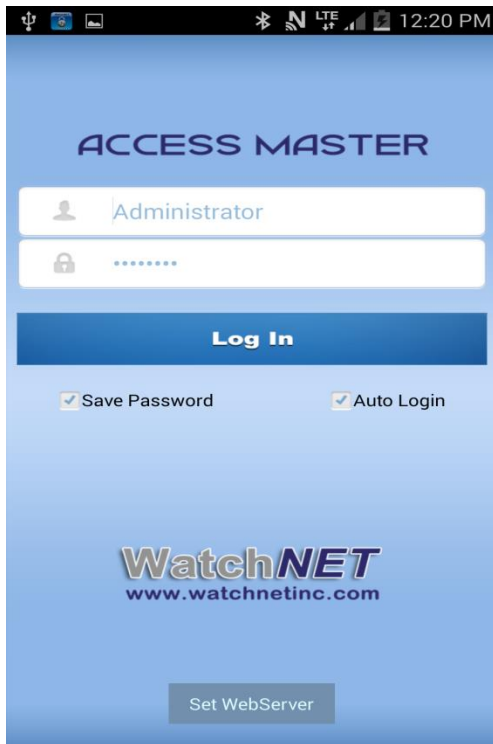
**Note: Port forwarding needs to be done on router before you can connect remotely with the public ip address.**

Then click on the *Advance* button to view the *Suffix path*.

By default the *Suffix path* would be “/WebService/AccessWS.asmx” only, so you would need to add “/Watchnetweb” in front of it so it should be like this : “/Watchnetweb/WebService/AccessWS.asmx”

Next click on **the Test Connection** button.

If connection was successful then click on the *Save* button and the *Back* button to bring you back to the *Log In* screen.



Enter the *User Name* and *Password* and then click on the *Log In* button.

**Note:** *You can use the default Administrator account or user can create additional account for login, to configure account please refer to full manual.*