



WatchNET Access Integrated Security Management Software

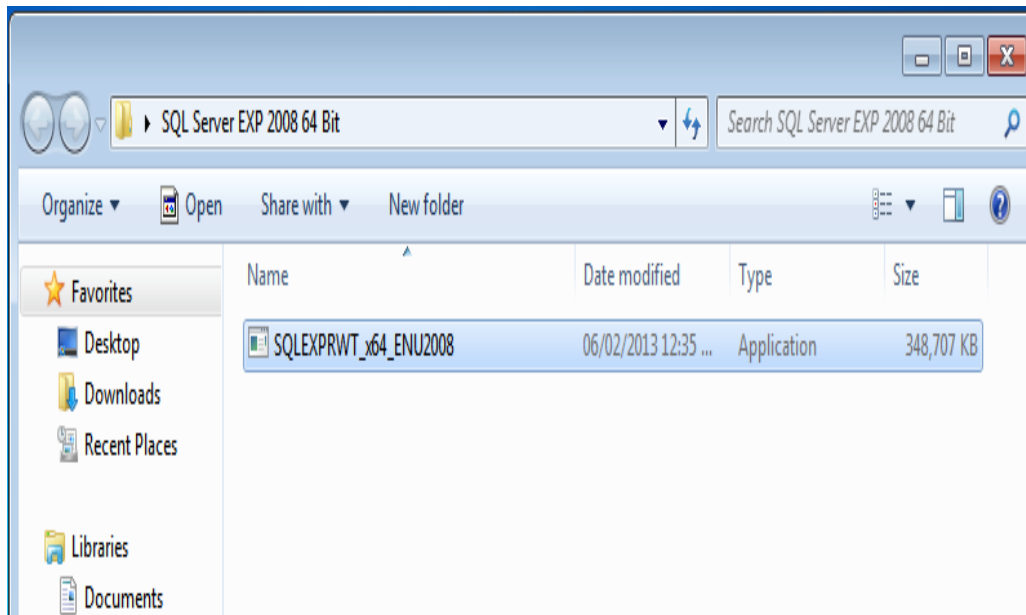
Installation of WatchNET Access Software using SQL Server 2008 Express



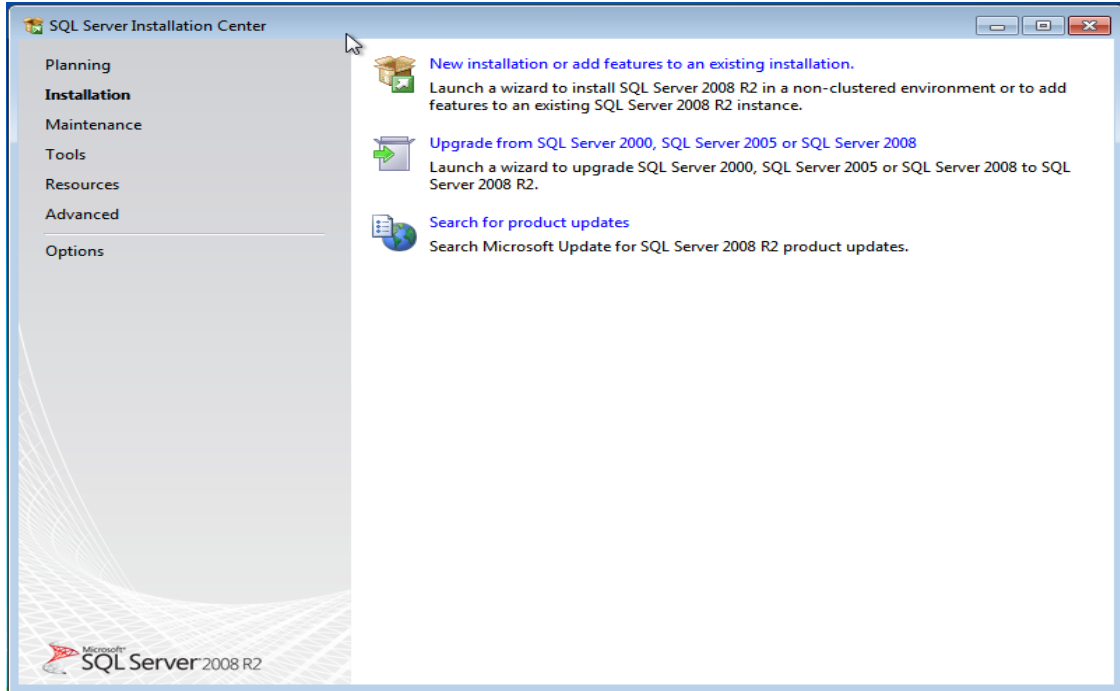
Revision History

Revision	Date	Author	Description of Changes
1.0	12/04/2013	Octavio Colantonio	Manual Created.

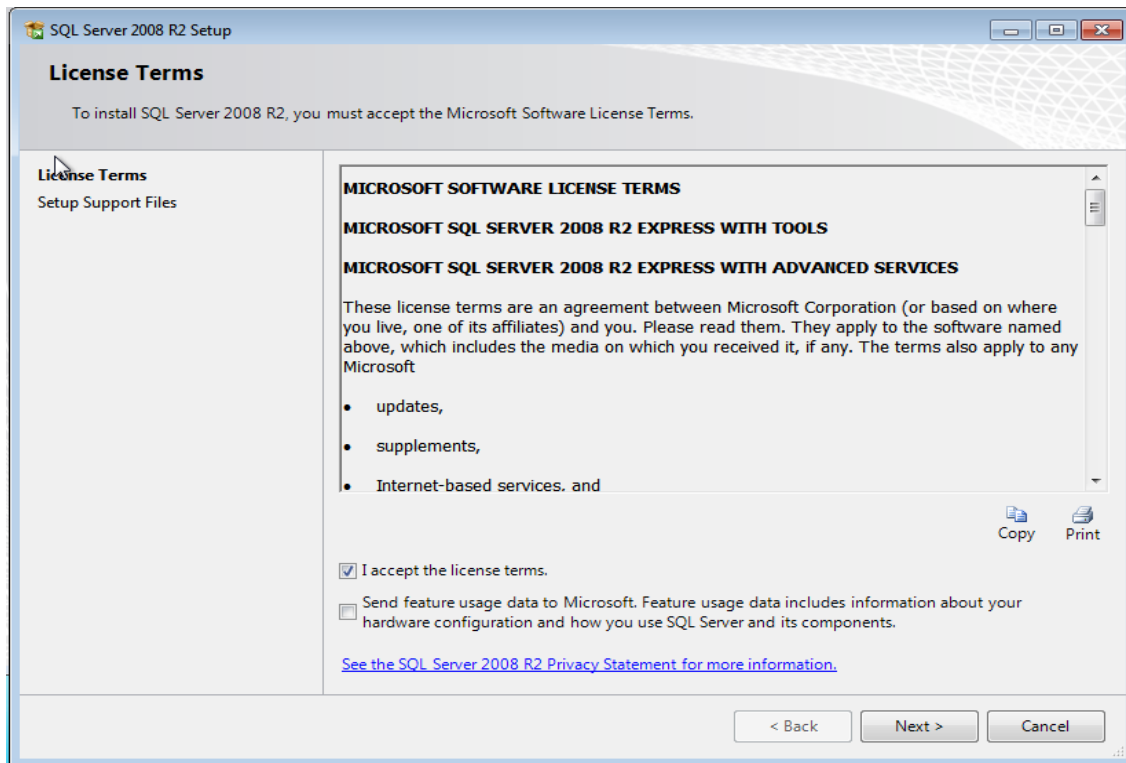
To Install the SQL Server 2008 Express and the SQL Server Management Studio Express double click on the *SQLEXPRTW_x64_ENU2008* from the *\WatchNET\WA SQL Server Package\SQL Server EXP 2008 64 Bit* folder on the CD.



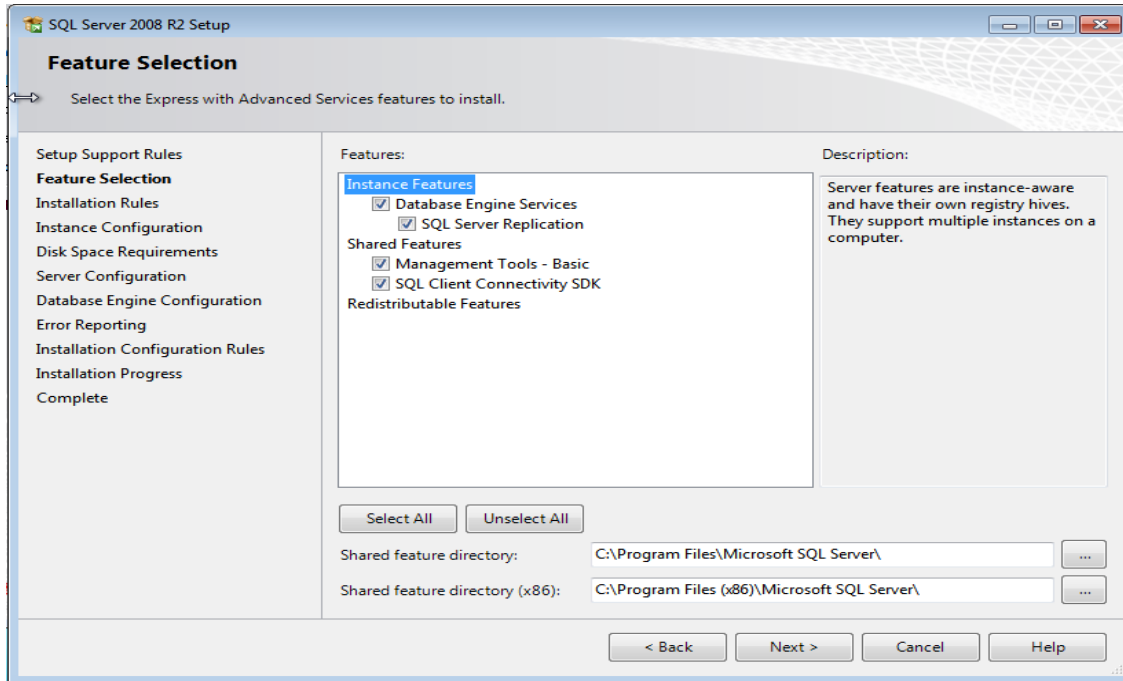
In the *SQL Server Installation Center* window click on *New installation or add features to an existing installation*.



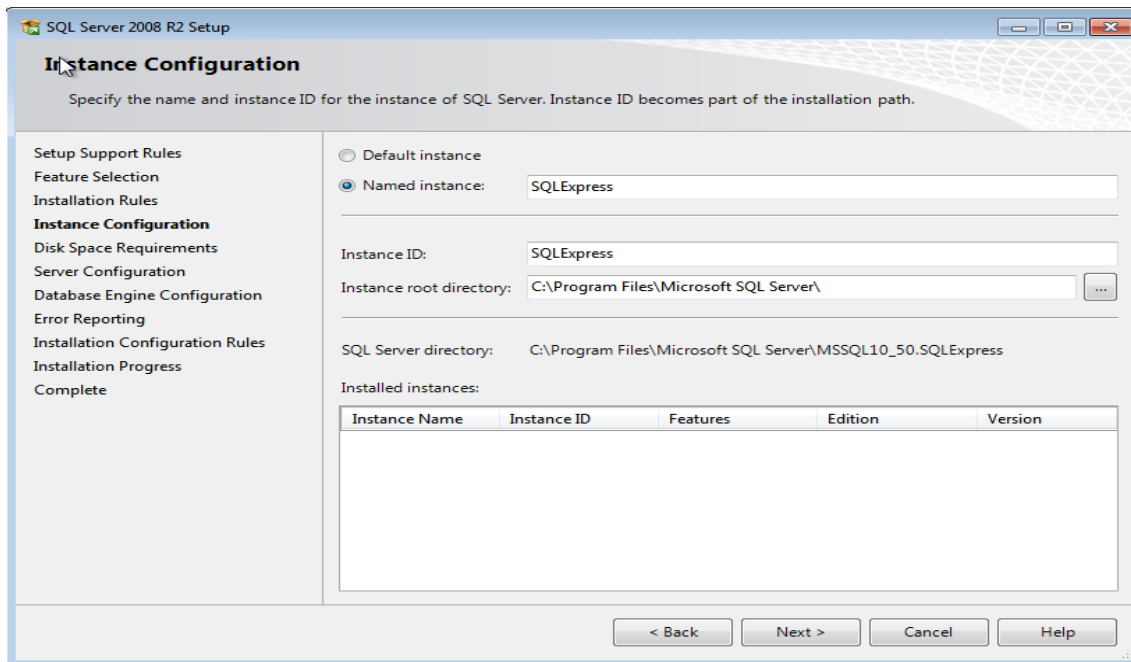
Check the *I accept the license terms* and click on *Next*.



Check all 4 options and click on *Next* to continue.

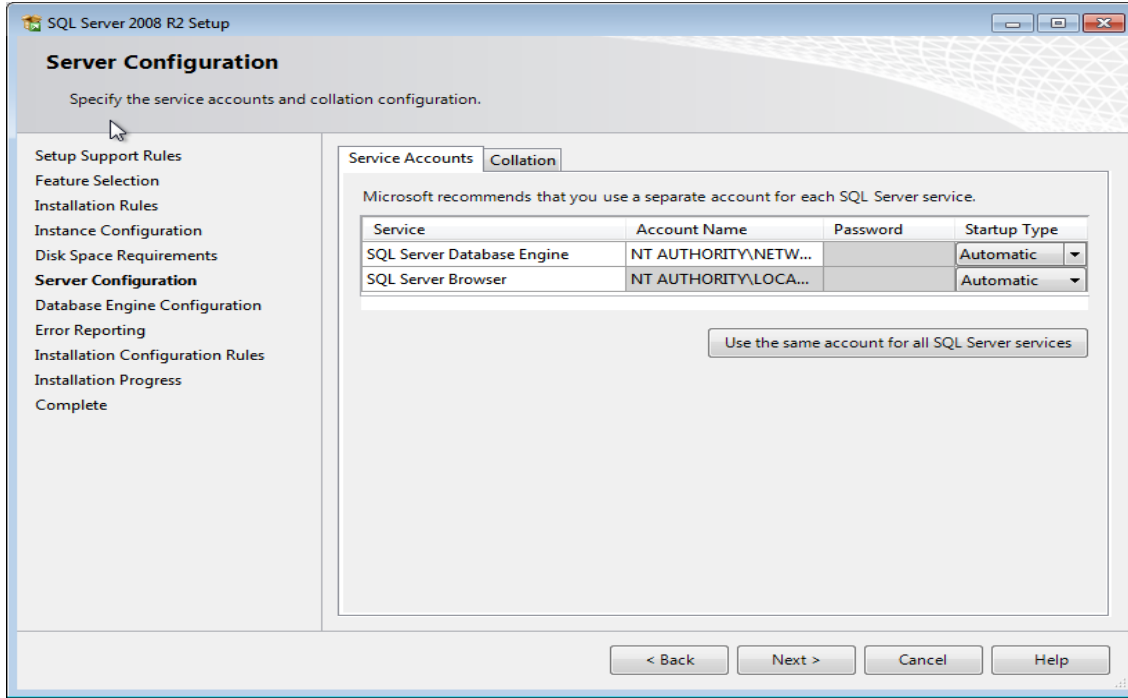


Select the *Named instance* option with is *SQLExpress* and click *Next* to continue.

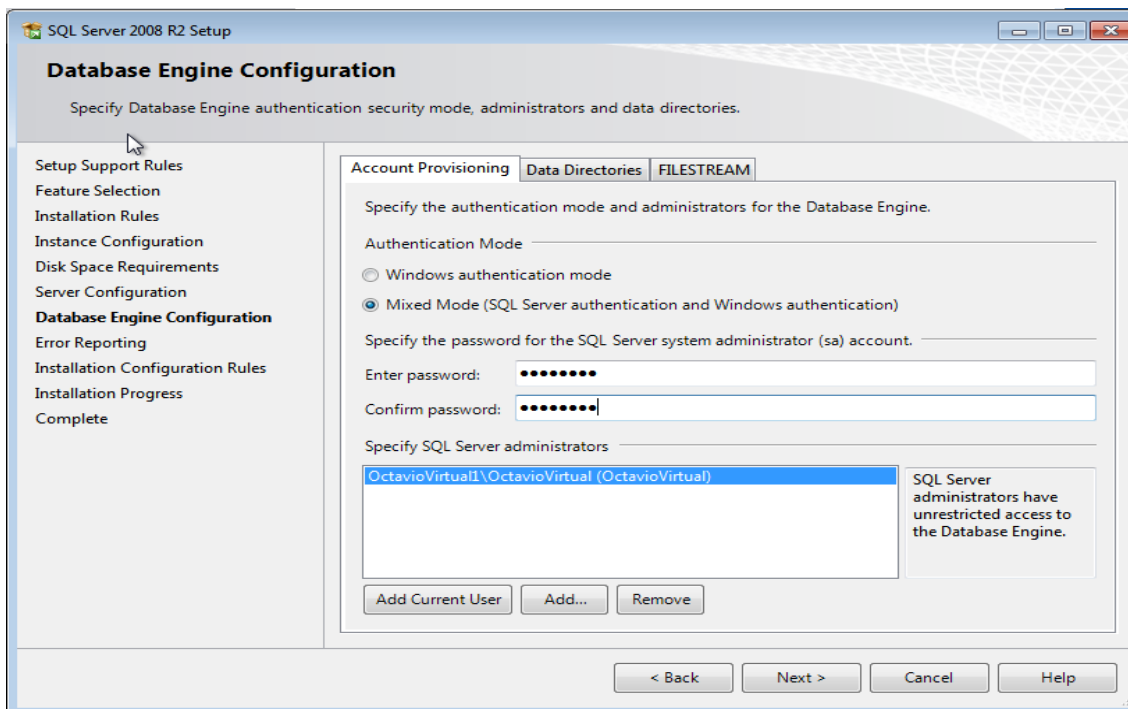


Select *Automatic* from the *Start up Type* column for both Services and click *Next* to continue.

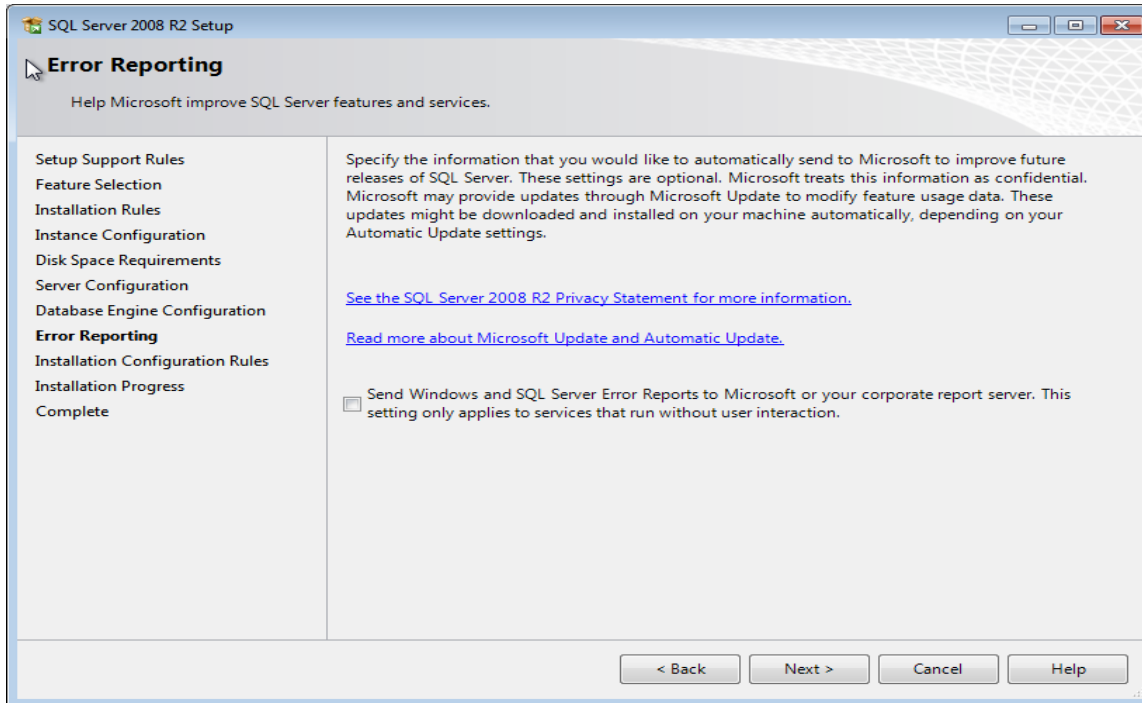
Note: in order to install Clients on workstations the SQL Server Browser has to be set to Automatic.



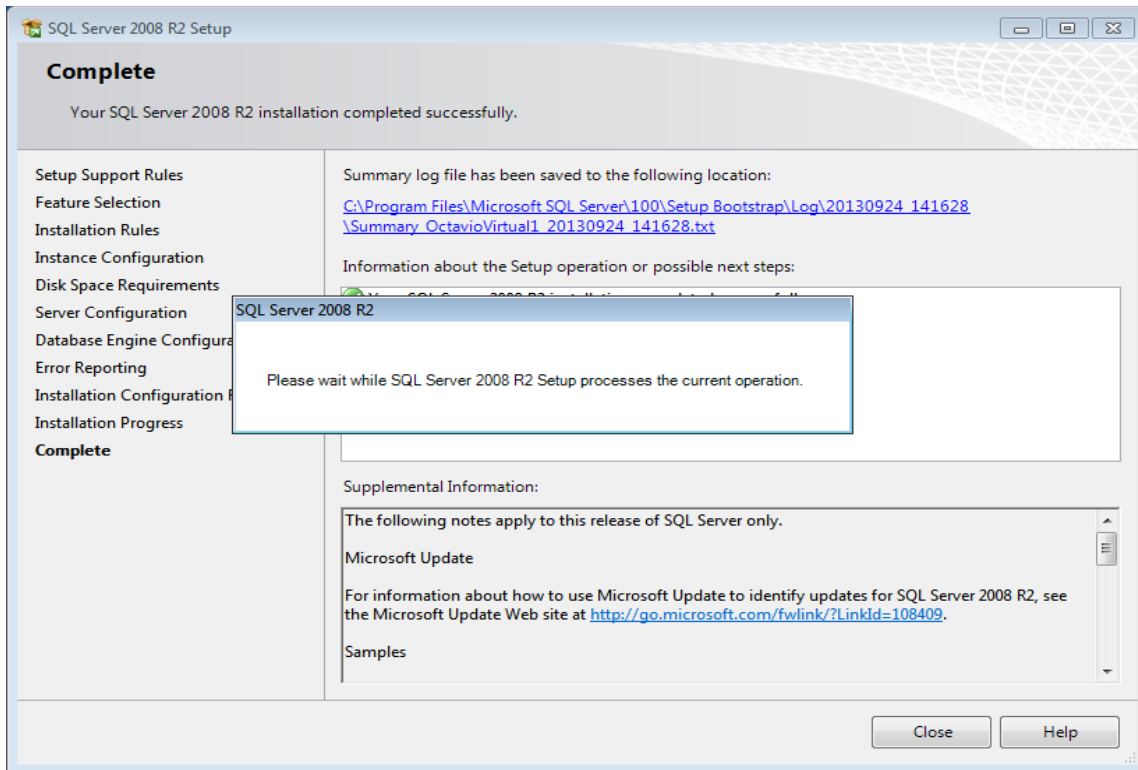
In the *Account Provisioning* tab select *Mixed Mode* and enter *watchnet* in the *Enter password* field and then enter *watchnet* again in the *Confirm password* field. Click *Next* to continue.



Click *Next* to continue.




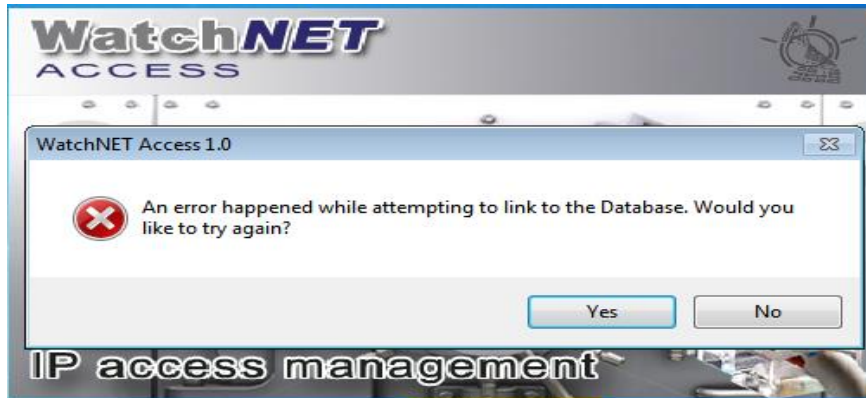
The installation is complete close the *SQL Server 2008 R2 Setup* window.



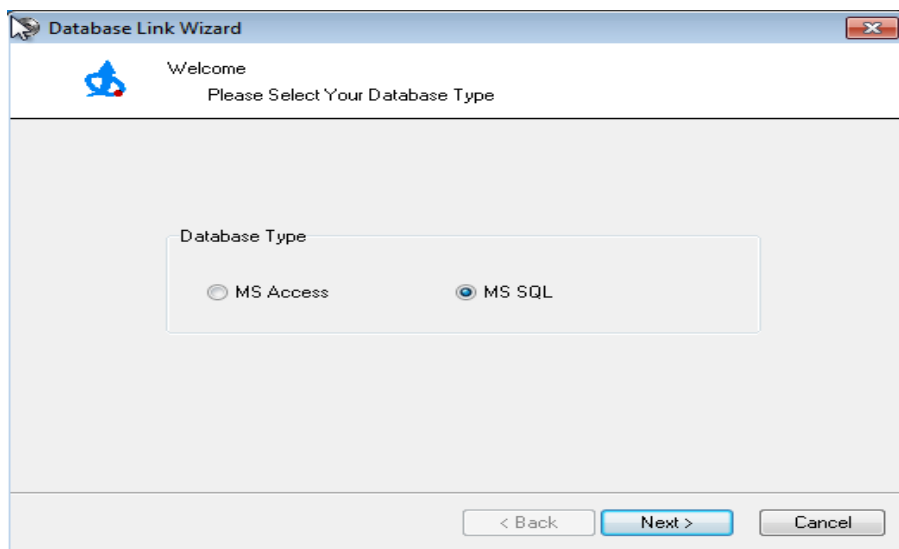
The next step is to install the WatchNET Access Control software.



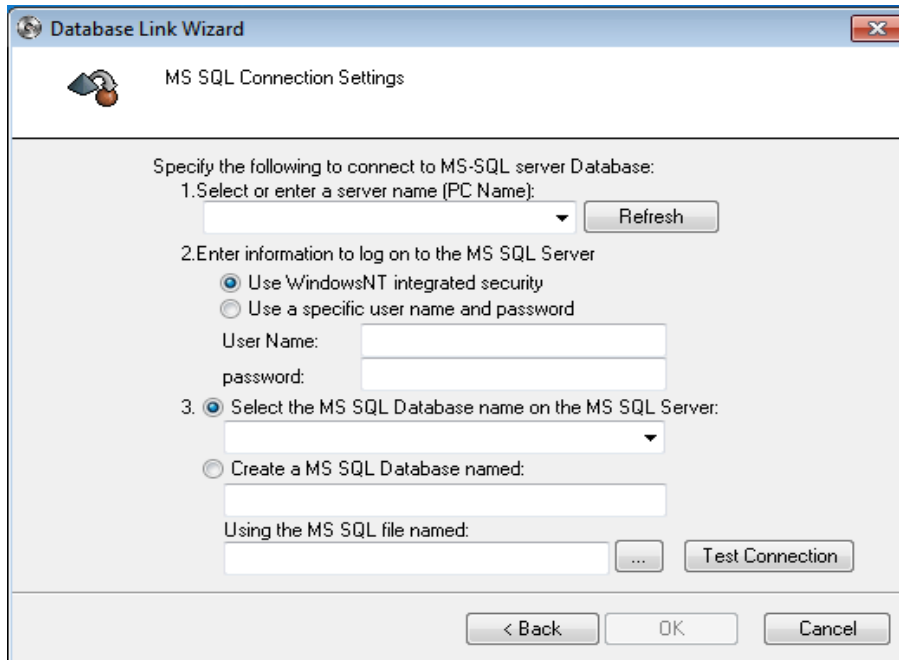
To launch the WatchNET Access Control software click on the  icon. Before logging in a warning message window is displayed. Click Yes to try to connect again to the Database.



Select the *MS SQL* and click on *Next* to continue.

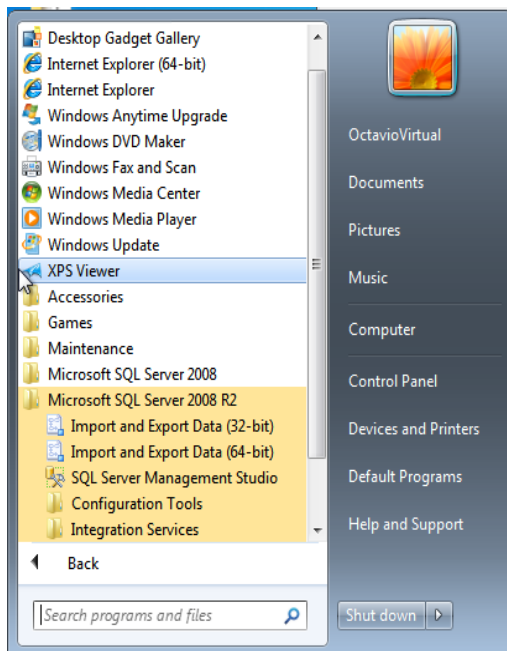


The *Database Link Wizard* window displays.

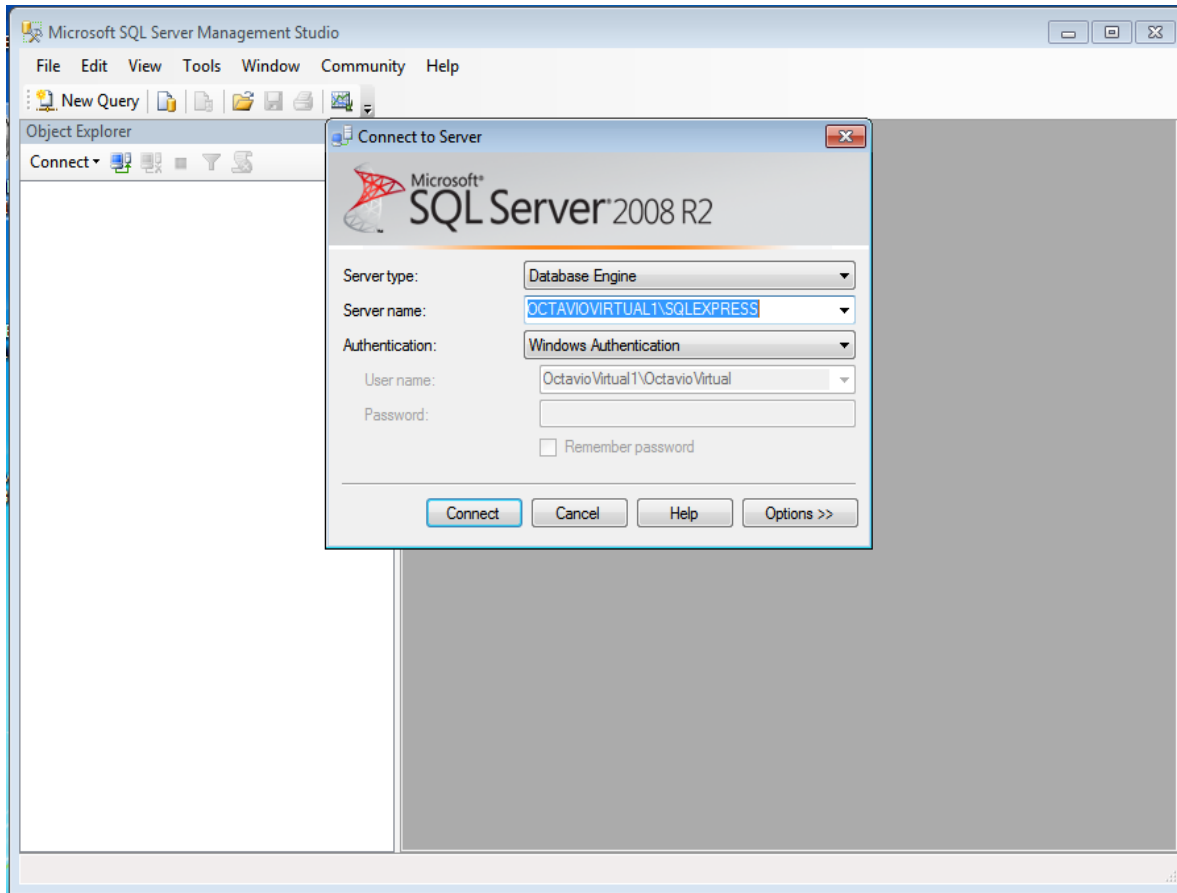


At this point we need to enter the correct *Server Name*. To find the correct *Server Name* click on the

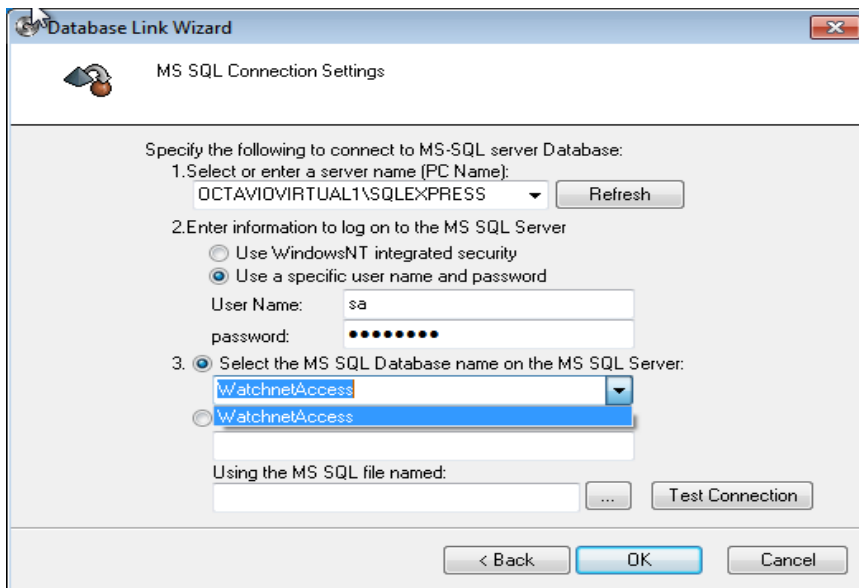
Windows Start  button. Then click on *All Programs -> Microsoft SQL Server 2008 R2 -> SQL Server Management Studio*.



Copy the *Server name* and click on *Cancel* and close the *Microsoft SQL Server Management Studio*.

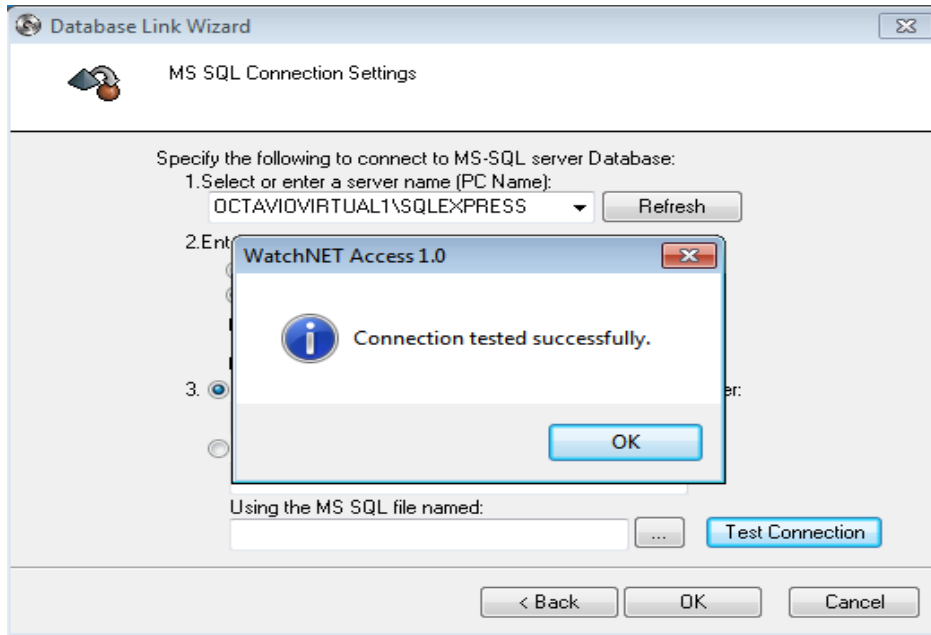


Paste the *Server name* in the text field in option 1.



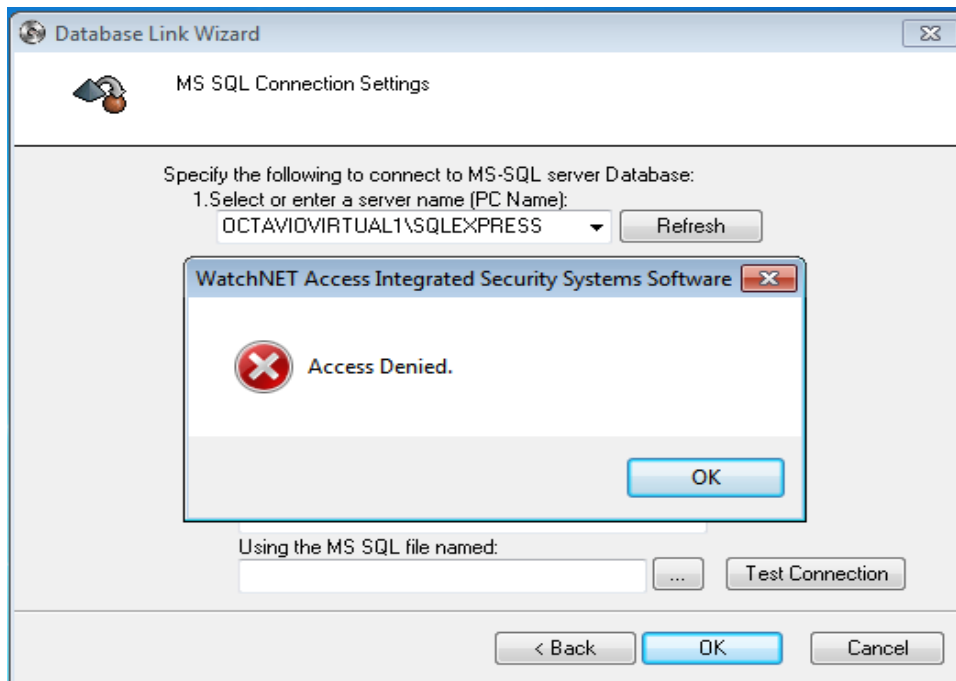
Next select *Use a specific user name and password*. Enter *sa* in the *User Name* text field and *watchnet* in the *password* text field. Check *Select the MS SQL Database name on the MS SQL Server*. Select


WatchnetAccess as the database from the drop down menu. Next click on the *Test Connection* button to test the database connection.

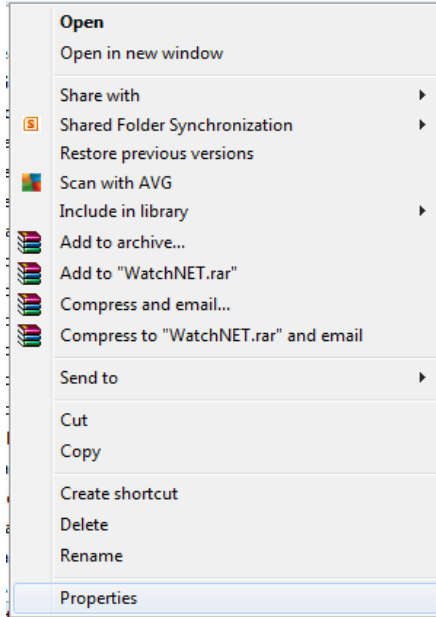


Click *OK* and *OK* again to complete the installation.

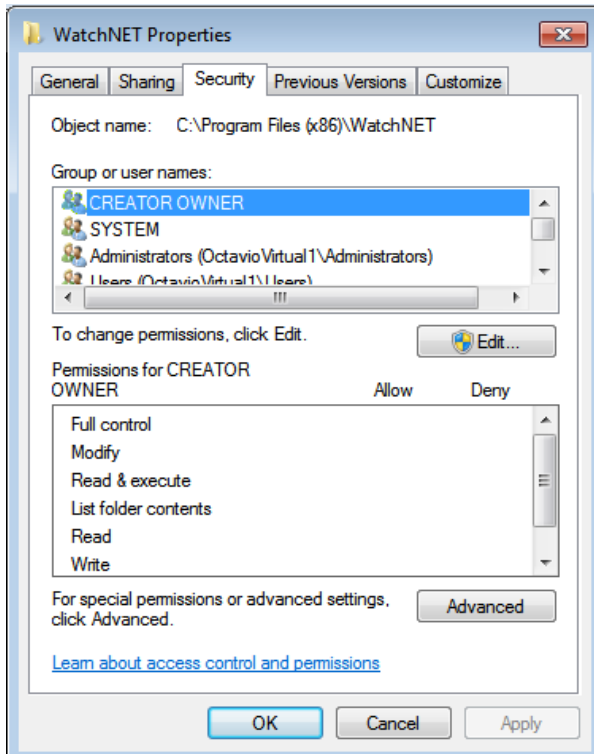
Note: *At this point you might see the following error message window.*



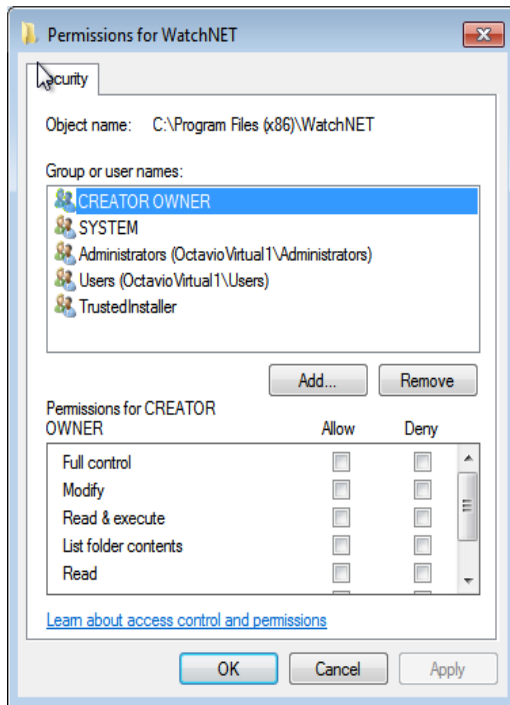
To assign access rights to the *WatchnetAccess* Database click on the *Windows Explorer*  button. Follow the path C:\Program Files (x86)\WatchNET and right click to bring up the menu.



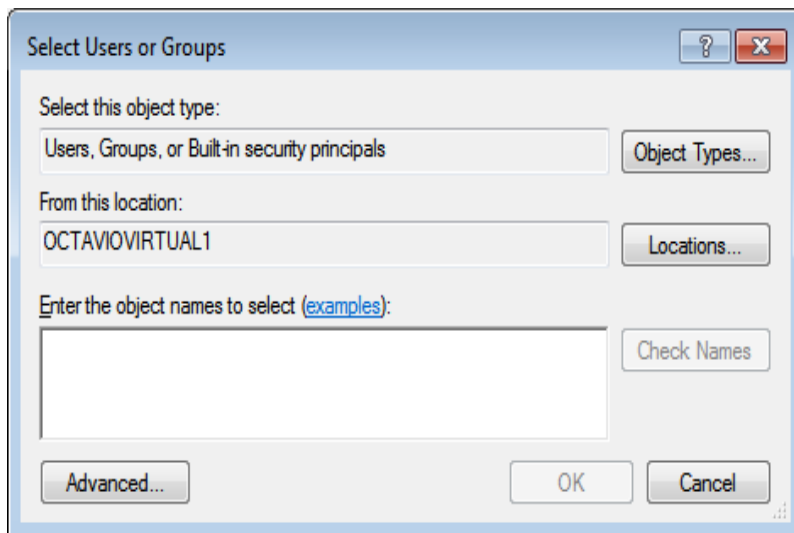
Click on *Properties* and then the *Security* tab.



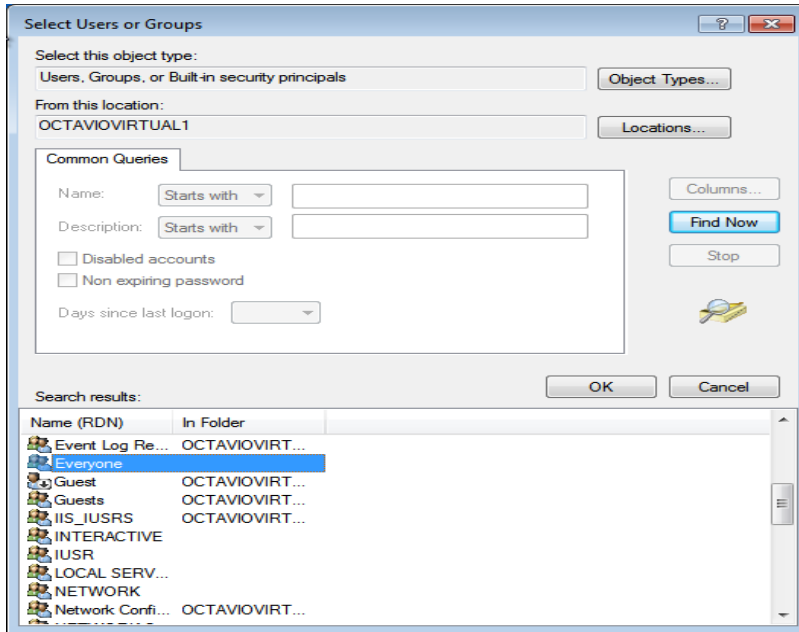
Click on the *Edit* button and then the *Add* button.



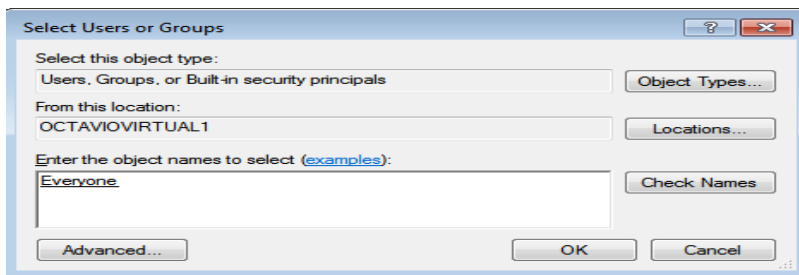
Click the *Advanced...* button.



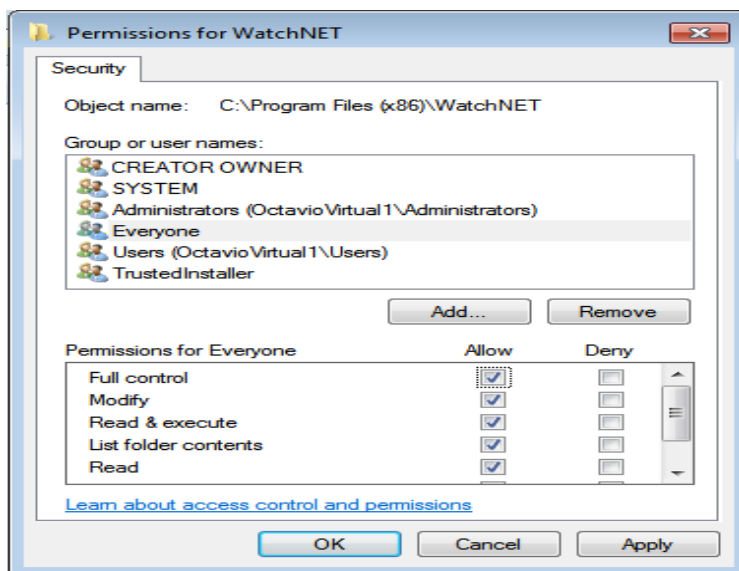
Click on the *Find Now* button and select *Everyone* and click *OK*.



Click *OK* to continue.



Check on *Full control* and *Modify* in the *Allow* column and click *Apply* and *OK* and then *OK* again.



Click the *Test Connection* button on the *Database link Wizard* window and click *OK* to complete the installation.

