



WatchNET

ACCESS

WatchNET Access Integrated Security Management Software

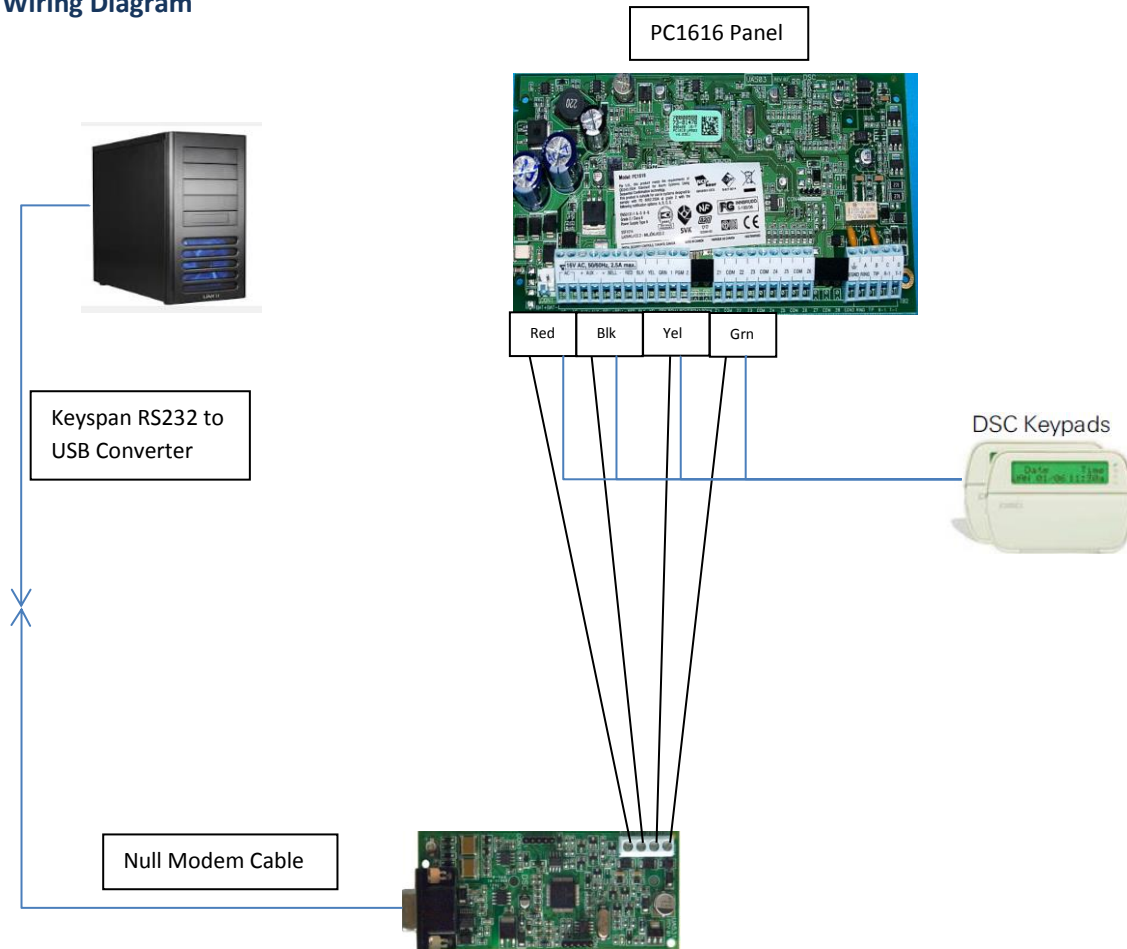
DSC Panel Integration



Revision History

Revision	Date	Author	Description of Changes
1.0	12/12/2013	Octavio Colantonio	Manual Created.

Wiring Diagram

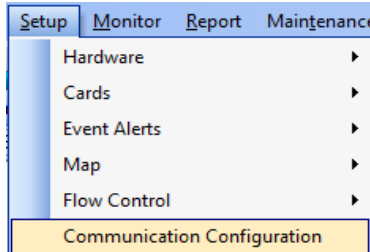


Configuring DSC Integration

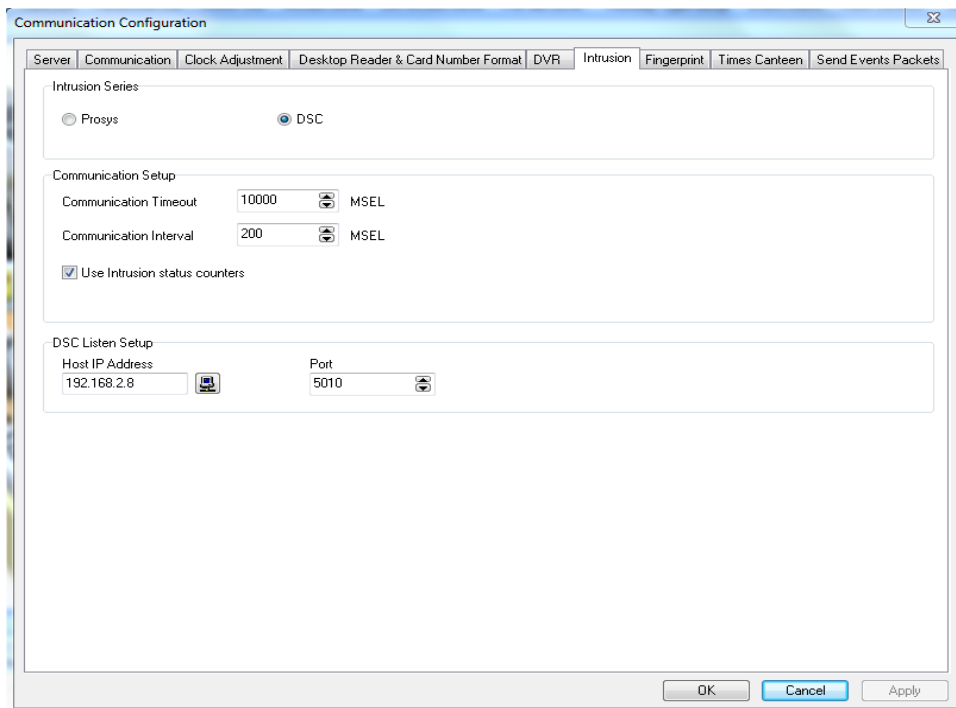
Note: Make sure that WAC Software version 1.0.10 or higher is installed for integration to work.

To begin configuring the DSC integration log in to the WatchNET Access Control software.

Click on *Setup* -> *Communication Configuration* to launch the *Communication Configuration* window.




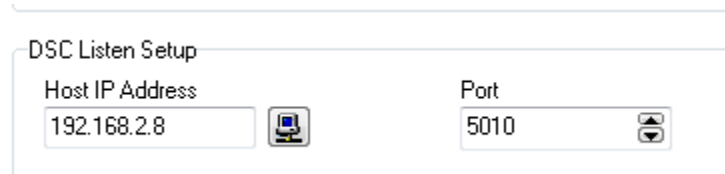
Click on the *Intrusion* tab and Select the *DSC* option.



Note: if the DSC option is missing then you will need to install version 1.0.10.

In the *DSC Listen Setup* make sure that the *Host IP Address* is correct and If it is different or has 0.0.0.0

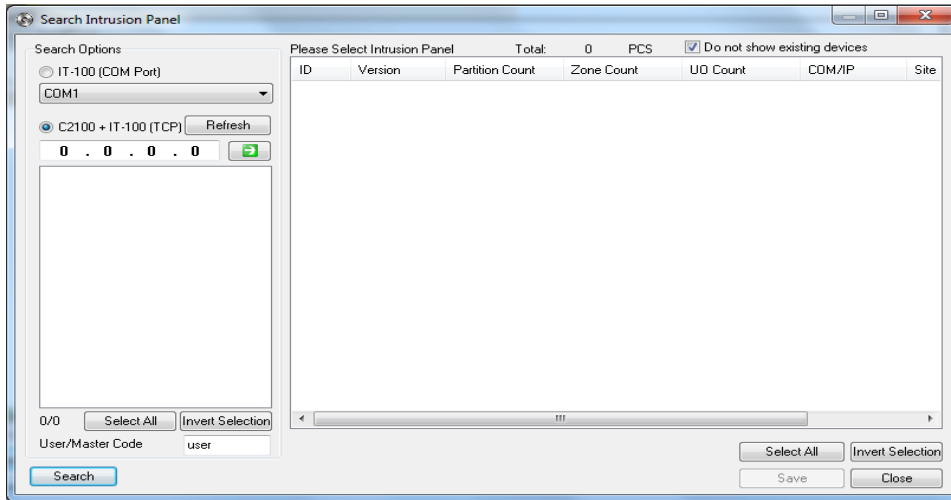
then click on the  icon to get the correct Host IP Address.



Click *OK* to continue to the next step.

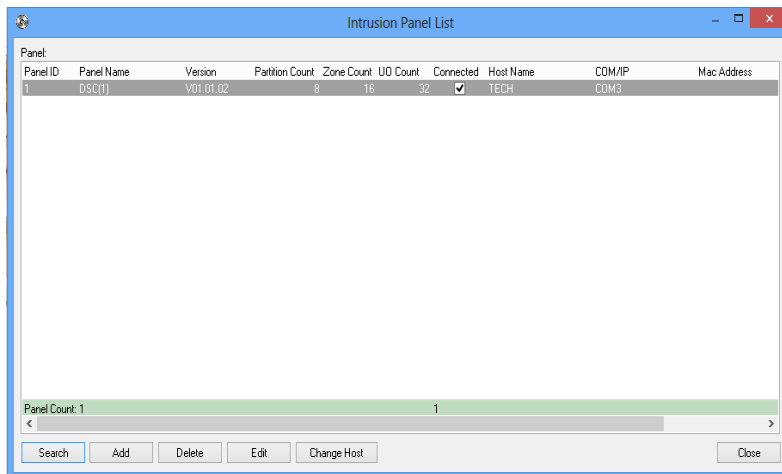
Searching Intrusion Panels

Click on *Setup -> Search Intrusion Panel* and the *Search Intrusion Panel* window will be displayed. Select *IT-100 (Com Port)* and select the com port that the IT-100 is connected to. Next click on the *Search* button to start the search for the DSC panels.



Select the DSC panels you want to connect to and click on the *Save* button.

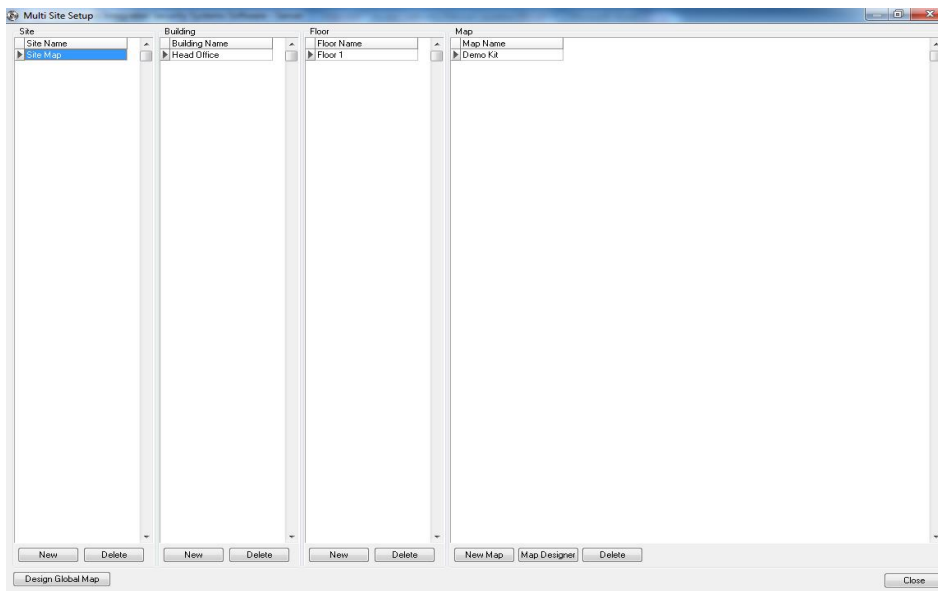
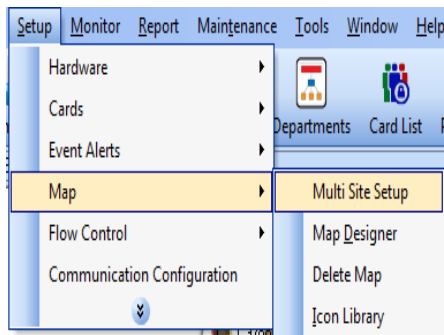
In the *Intrusion Panel List* you will see the panels that are connected to the system.

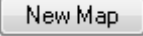


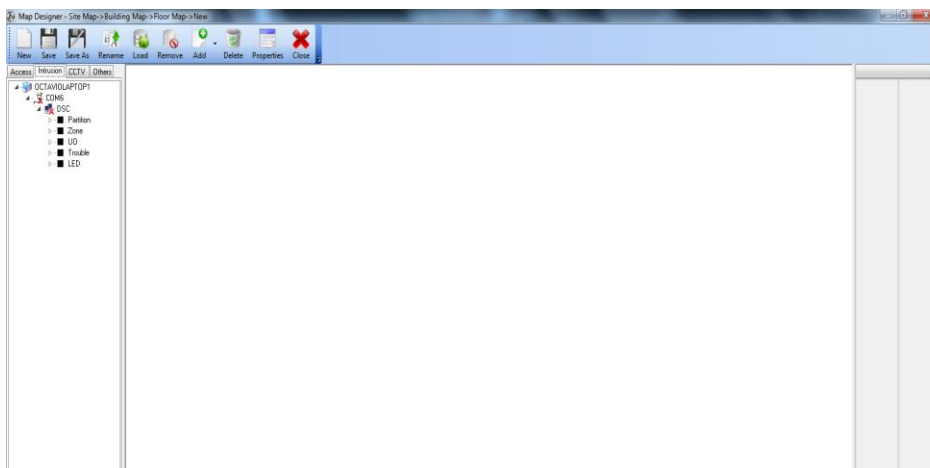
Click *Close* to exit the window.


Creating a Map and Adding Device Icons

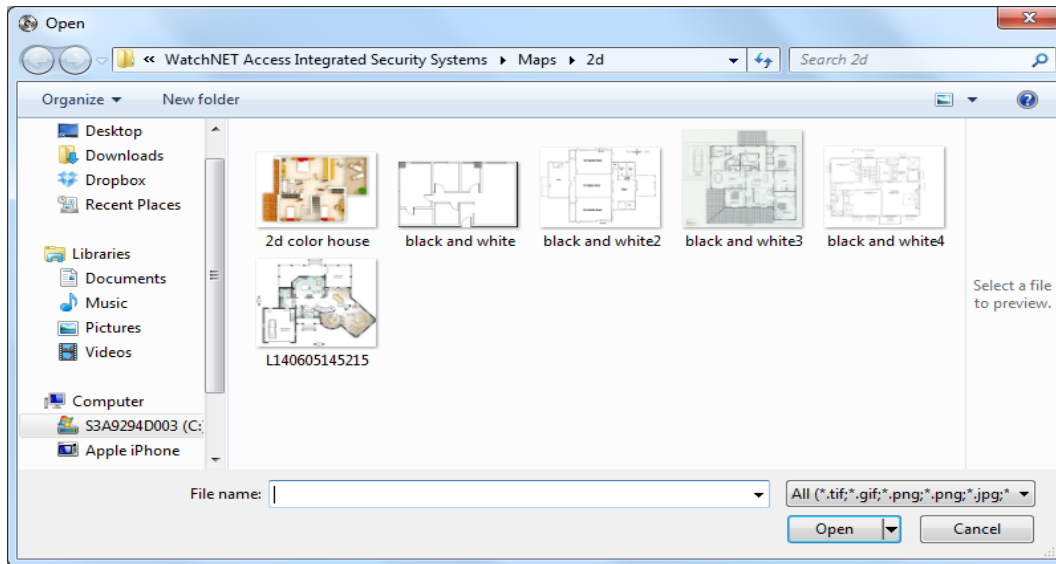
To begin to add a map click on *Setup -> Map -> Multi Site Setup*.



In the *Multi Site Setup* window click on the  button to launch the *Map Designer* window.



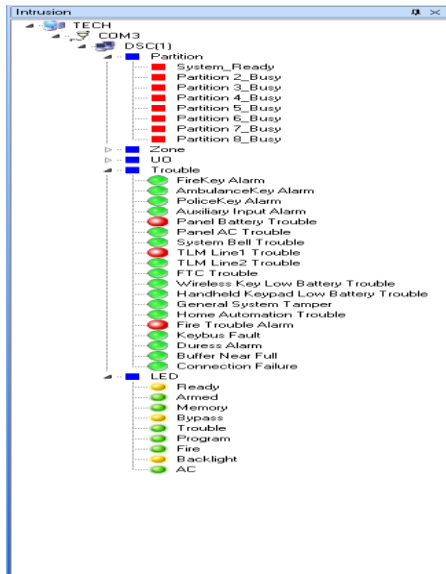
Click on  button to open a map. The default path is C:\Program Files (x86)\WatchNET\WatchNET Access Integrated Security Systems\Maps\. If you have a map saved to another location then follow that path and open the desired map.



Select the desired map and click on *Open*.



Click on the *Intrusion* tab and drag and drop the desired icons onto the map.



Click on the  button and name the newly created map and click on *OK* to complete the installation.

