



## WatchNET Access Integrated Security Management Software

### Configuring Video Integration

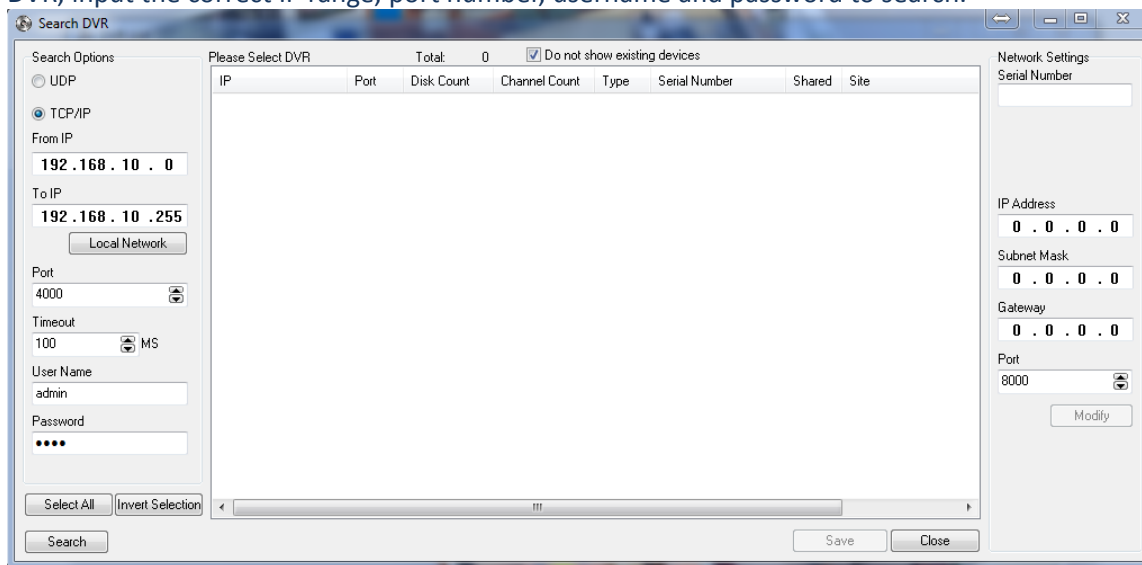


## Revision History

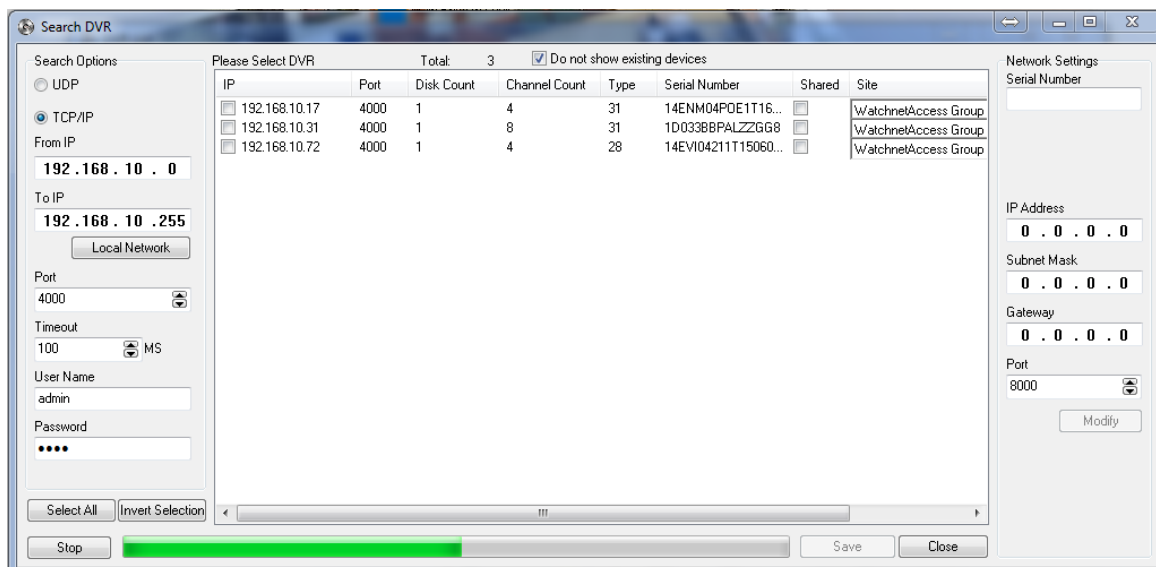
Revision	Date	Author	Description of Changes
1.0	22/07/2014	Octavio Colantonio	Manual Created.
2.0	04/11/2018	Peter Punzalan	Updated Manual and screenshots

### DVR Configuration

DVR, NVR and IP Cameras can be search on the local network by going to Setup – Hardware – Search DVR, input the correct IP range, port number, username and password to search.



Once the IP range is set click on the *Search* button to start the search.

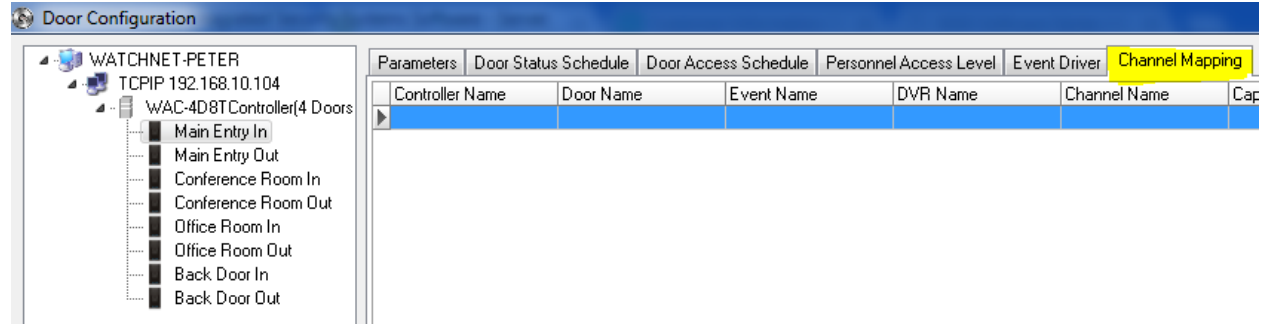


Check the DVR's that you want to add and then click the *Save* button to add the selected DVR's.

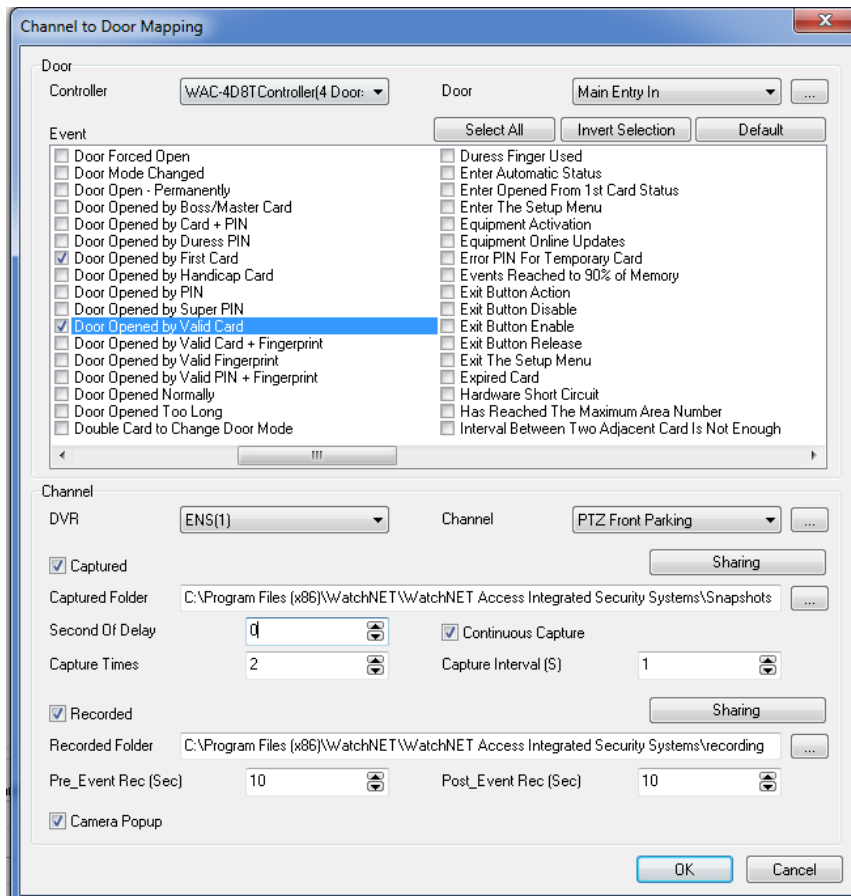
### Channel Mapping

This feature takes snapshot or recording from the DVR depending on the event type such as “Door open by valid card”, “Invalid Door/Time” or “Door Forced Opened”.

To configure this feature go to Door Configuration, select the door then go to Channel mapping tab.

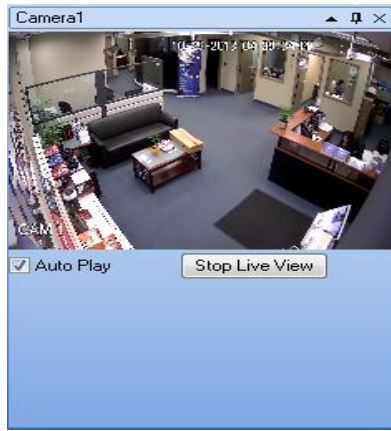


Click Add More to select multiple events at the same time, select the DVR and Channel and make sure to enable Captured, Recorded and Camera Popup, also allow you to take multiple snapshots for that event.



**Note: in order for the Recorded to work the DVR has to be setup for 24 hour recording.**

With this configuration when Main Entry got valid card, invalid door time or forced open then OTZ Front Parking of the ENS DVR will take 2 snapshots and also record a Pre and Post event recording for 10 seconds. Also the Camera will pop up on the Video window of the screen.



**Note: In order for the pop ups to be displayed the Auto Switchover and the Auto Play check boxes have to be checked.**

