



WatchNET Access Integrated Security Management Software

Armed Linkage

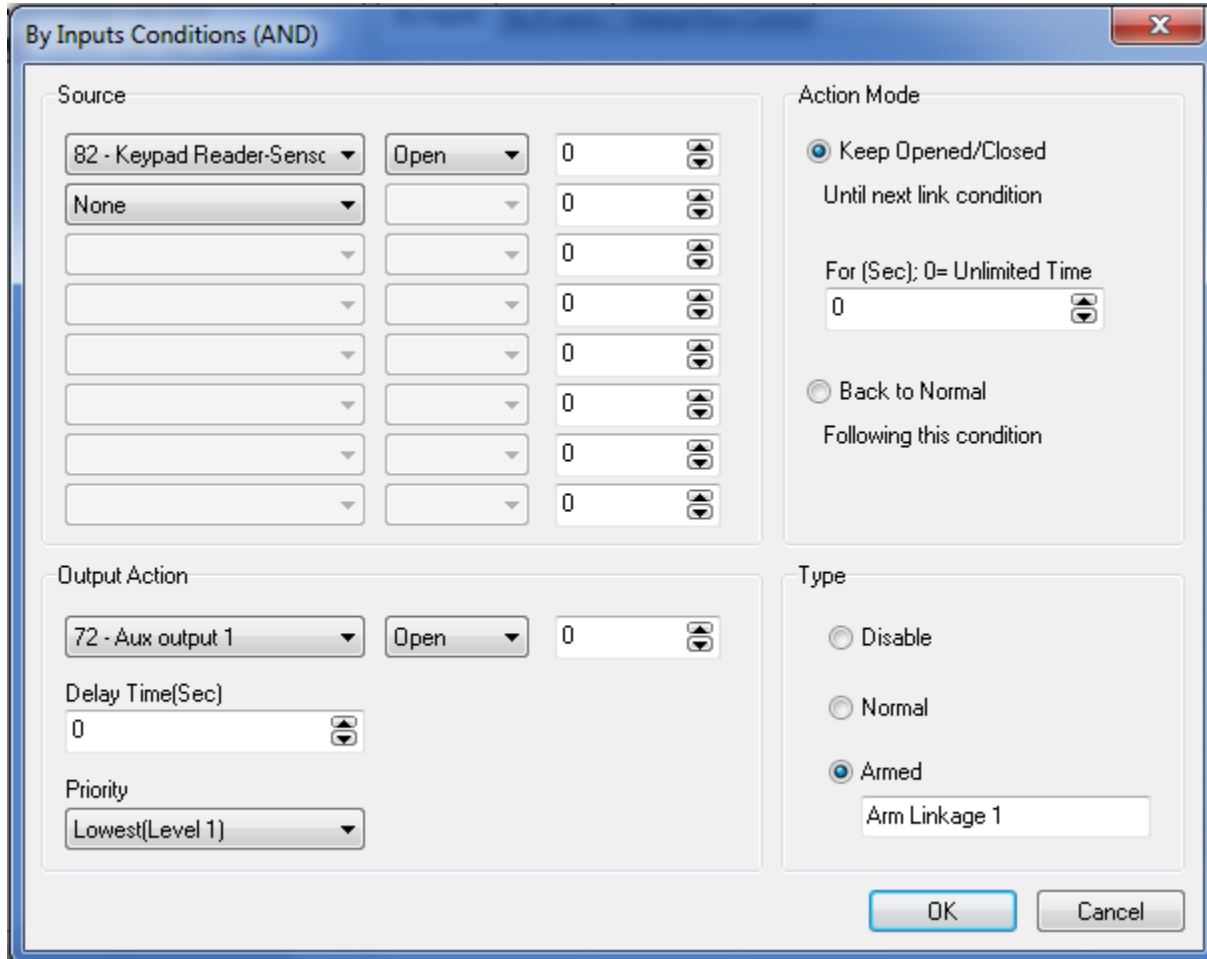


Revision History

Revision	Date	Author	Description of Changes
1.0	09/05/2013	Pradeep Kumaran	Manual Created
2.0	04/11/2018	Peter Punzalan	Updated Screenshots and Manual

WatchNET Access software enables events to be controlled through the keypad reader by entering specific codes. Up to eight linkages is possible per reader depending on the controller type. In order to use this function we first need to program a link through flow control. Let's assume a scenario where we have a Door Sensor connected to Door Sensor 3 and we need an Alarm on Auxiliary Output 1 only when Door Sensor 3 is in Open condition and the linkage is armed.

To achieve this we need to program a flow control and enable this as Armed Linkage 1 as indicated below:



By Inputs Conditions (AND)

Source	Condition	Value
82 - Keypad Reader-Sensc	Open	0
None		0
		0
		0
		0
		0
		0

Action Mode

Keep Opened/Closed
Until next link condition

For (Sec): 0= Unlimited Time
0

Back to Normal
Following this condition

Output Action

72 - Aux output 1 Open 0

Delay Time(Sec)
0

Priority
Lowest(Level 1)

Type

Disable

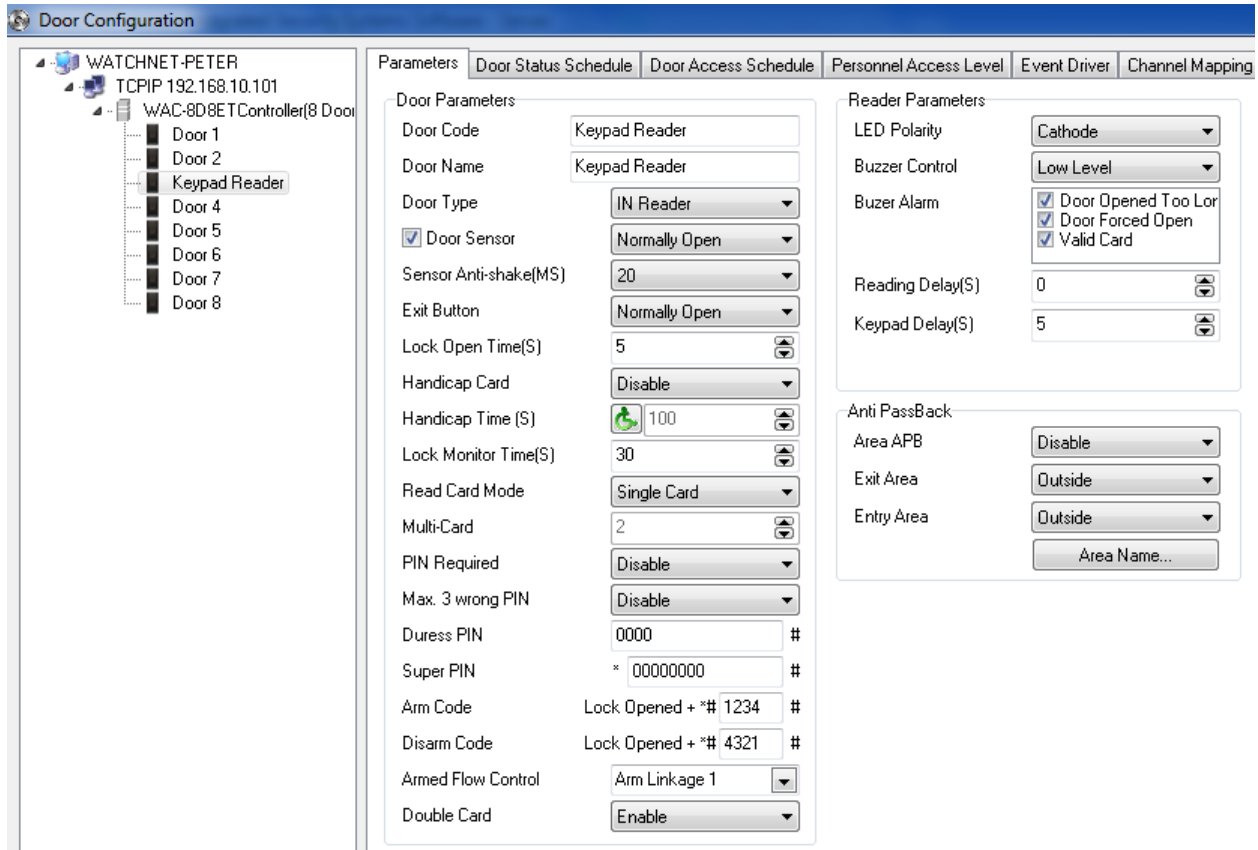
Normal

Armed
Arm Linkage 1

OK Cancel

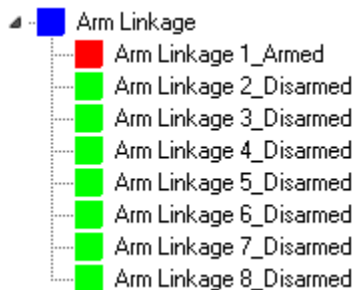
Once this is done then we need to activate this link through Keypad card readers on this controller. Let's now move to Door Parameters. In the door parameters choose the reader which has the keypad and in

the door parameters tab set the Arm Code and Disarm Code as indicated below. This code is then set to Armed Linkage 1 or whatever was programmed to achieve what we need.



To use this function through a reader, first flash a valid card that has access to that door at that time and enter the appropriate codes to Arm and Disarm the linkage, once the linkage is Armed the auxiliary output 1 will be triggered whenever the door sensor is triggered open.

Arm Linkage 1 is armed



You can test this by right clicking the Keypad Reader Sensor and selecting “Always Open”
The Aux output will stay triggered until the disarm code has been entered on the keypad.

